

**FINAL REPORT**

# **RPG-2 I**

**REGIONAL PLAN FOR GOA - 2021**

**RELEASE THREE**

**STATE LEVEL COMMITTEE FOR REGIONAL PLAN FOR GOA -2021**

## STATE LEVEL COMMITTEE FOR RPG-2021

Government on the recommendation of the Town & Country Planning Board (133<sup>rd</sup> Meeting) held on 29.9.2008 constituted a State Level Committee for the purpose of the Regional Plan for Goa 2021 which was notified for inviting comments on the Official Gazette Series III no. 29 dated 16.10.2008.

The State Level Committee members were appointed vide order no. 29/8/TCP/TF/RP-2021/VPM/08/4507 dated 28.11.08 and 29/8/TCP/TF/RP-2021/VPM/08-09/738 dated 12.2.2008

**The SLC hereby submits its Final Report RPG 2021 – Release Three for acceptance and notification.**

Sd	Sd
Hon. Chief Minister Shri Digambar Kamat Chairman	Padma Vibhushan Ar. Charles Correa Ex-Vice Chairman Task Force Member
Sd	Sd
Shri Rajani Kant Verma, IAS Principle Secy. (T.C.P.D.) Member	Er. Rahul Deshpande Ex-Member Task Force Member
Sd	Sd
Shri Bryan Soares Chairman, Indian Institute of Architects Member	Shri Dean D'cruz Ex-Member Task Force Member
Sd	Sd
Shri Menino D'souza Director of Panchayats Member	Shri Sanjit Rodrigues, Director Directorate of Industries, Trade & Commerce Member
Sd	Sd
Shri S.T. Puttaraju Chief Town Planner Member & Convenor	Shri D.A. Havaladar Director of Municipal Administration Member

<b>CONTENTS</b>	<b>Pg. No.</b>
<b>Chapter 1      INTRODUCTION</b>	<b>01</b>
<b>Chapter 2      NEW AND MODIFIED POLICIES</b>	<b>04</b>
2.1      Outline Development Plan (ODP) Areas	04
2.2      Classification Of Settlements	05
2.3      Export Promotion Zone (EPZ) Boundary (Around Verna Industrial Estate)	05
2.4      Coastal Regulation Zone (CRZ) Areas	06
2.5      Tourism	06
2.6      Affordable Housing	07
2.7      Town Planning Schemes (TPS)	07
2.8      Open Spaces	07
2.9      Conservation Area	08
2.10      Plan Review	08
<b>Chapter 3      ADDENDUM AND ERRATA</b>	<b>10</b>
<b>Appendices</b>	<b>11</b>

## I. INTRODUCTION

- 1.1 This Report (Release Three of the Final RPG-2021) is issued by the State Level Committee (SLC) that was set up to process the public comments received in response to the Draft RPG-21.
- 1.2 'Release One', along with Surface Utilization Plans (SUPs) of the talukas of Pernem and Canacona Talukas, was notified on 25 November 2010, followed by the SUPs of Quepem, Ponda, and Sattari (notified on 28<sup>th</sup> April 2011) and 'Release-Two' of the Final RPG-21 Report along with the SUPs of the following three talukas of Bicholim, Dharbandora, Sanguem and were notified on 15<sup>th</sup> September 2011 in the Official Gazette (see **Appendix I**) During the creation of the new taluka of Dharbandora, the Village Panchayat of Usgao-Gangem which was originally in Ponda taluka was delineated to be a part of Dharbandora taluka. However subsequently, the Government decided to retain the said Village Panchayat area in Ponda taluka. As a consequence, the SUP of the said VP area was left out from both the earlier notifications i.e. SUPs of Ponda and Dharbandora talukas. A separate notification has since been issued vide 29/8/TCP/2011/RP-21/Pt. file/3983 dated 29<sup>th</sup> September 2011(see **Appendix II**).
- 1.3 This Report, Release Three of the Final RPG-21, focuses on the four coastal talukas of Bardez, Tiswadi, Mormugao and Salcete. These four talukas are heavily populated and the most urbanized of all the talukas of Goa. As per the Census 2011 provisional figures, out of a total State population of 14.57 lakh, these four talukas house a little more than half of the total population (7.95 lakh people (i.e. 54.56%). By 2021, the population projection for Goa is estimated at 18.07 lakh with nearly 13.11 lakh living in urban areas spread over 72 census

towns and 14 cities (*Draft RPG-21, based on Census 2001*). Of this population, it is estimated that 12.36 lakh will be staying in these four coastal talukas with the urban areas in these talukas accounting for 80.51 % of the population. Most economic activities including tourism related development are concentrated in these four talukas.

- 1.4 A number of plans, popularly known as Outline Development Plans (ODP) and Zonal Plans (ZP), have been prepared in the past which are being implemented and used for development control. There have been instances where there has been an overlap of the Regional Plan 2001 vis-à-vis the Zoning Plans, Outline Development Plans etc. Frequent alterations of boundaries of planning and development authorities in the past meant that along with shifting jurisdictions were issues pertaining to lack of congruence between multiple plans and lack of transparency for the common man. Currently there are 5 planning areas such as Panjim Planning Area, Mapusa Planning Area, Vasco Planning Area, Margao Planning Area and Ponda Planning Area. These planning areas are administered and controlled through the ODPs and the relevant sections of the TCP Act 1974 by the respective Planning and Development Authorities (PDAs). The SLC recommends the streamlining of the present scenario by discontinuing the old ODPs and the Zoning Plans and bringing all the areas (outside the Planning Areas) into a single platform of the RPG-21. From the date the RPG-21 comes into force, all other plans shall cease to exist.
- 1.5 This document, 'Release Three', accompanies the Surface Utilization Plans (see **Appendices V-VIII**) and the area statements for the 4 remaining talukas - Bardez, Tiswadi, Mormogao and Salcete. (see **Appendices III & IV**). These Surface Utilisation Plans have addressed issues pertaining to the areas covered in the old ODPs (outside the jurisdiction of the Planning and Development Authorities) which are presently being used for development control works. The

Report also addresses issues related to the VP status of panchayats covered under such ODPs, migrant and workers housing and the pressures faced by the coastal talukas.

1.6 Some new and modified policies are included in **Chapter 2** of this Report. These are regarding:

- a) ODP Areas
- b) Export Promotion Zone (EPZ)
- c) CRZ areas
- d) Tourism
- e) Affordable Housing
- f) TPS Schemes
- g) Open Spaces
- h) Conservation Areas
- i) Review Process

1.7 The final document to be released will be the Comprehensive Report of Final RPG-21, which will incorporate the content of all the Releases One, Two and Three along with the relevant content of the Draft Report of RPG-21 (after taking into account the comments received on the Report). The final Report showing surface utilization plans will include the State Level Regional Plan and two District level Plans in addition to the twelve Taluka plans which are already part of Releases One, Two and Three.

## **2. NEW AND MODIFIED POLICIES**

### **2.1 OUTLINE DEVELOPMENT PLAN (ODP) AREAS**

All old ODP and the zoning plans boundaries (other than ODPs of Panjim, Mapusa, Margao, Ponda, Taleigao and Vasco) are now dissolved and the Final RPG-21 has been drawn up which incorporates all existing ODPs and Zoning Plans (Areas listed as per Appendix IX and X Release One) with modifications as under:

- a) Eco-sensitive -I areas are superimposed on all the notified ODPs within the jurisdiction of PDAs and then merged with the RPG-21. Such zones are indicated in a separate index over the proposed developable zones. Wherever the eco-sensitive areas are overlapping with the proposed developable zones as per the existing ODPs they are indicated with separate indices. It shall be enjoined upon the Government and the Planning and Development Authorities (PDAs) to review such zones for restoring Eco Sensitive Zones.
- b) The policy put in Release One, 4.7.1- 1.e, p. 24 shall continue to apply in Zoning Plan areas and old ODP areas outside PDA jurisdiction, settlement zones with FARs beyond 80 and in the case of Commercial zones with FARs above 100 if specified shall be reduced by 20% for development of plot areas of 4000 m<sup>2</sup> and above.

- c) All Commercial zones of old ODPs are to be retained as C3 zone, unless approvals / development permissions/ NOCs by competent authorities are issued prior to the notification of these plans.
- d) All institutional zones (P) shown in old ODP areas are scrapped except in situations where there are existing structures on the ground.
- e) All settlement areas within the Kadamba ODP (been in existence since over a decade) where there are significant existing green cover, are now classified as S4, with a view to preserve these areas with green cover, have lower density and low height. However this policy shall apply with prospective effect.

## 2.2 **CLASSIFICATION OF SETTLEMENTS**

The State Level Committee has reviewed the classification of settlements notified in the Draft Regional Plan for Goa - 2021, based on the inputs received from the local bodies and based on the review of the Zoning Plans and the old Outline Development Plans. The details of the revised classification of settlements are placed at **Appendix IX** and **X**. The classification notified in Release - One at Appendix - IV (ref. 4.1.5, page 23) stands modified accordingly.

## 2.3 **EXPORT PROMOTION ZONE (EPZ) BOUNDARY** (around Verna Industrial Estate)

The RPG-2001 had indicated the boundary of EPZ around Verna Industrial Estate. The GIDC acquired the land and developed the Industrial Estate in

phases. A large area including settlement areas orchards, slopes, paddy fields etc. were coming under the EPZ boundary. The approvals given within the EPZ area appears to be arbitrary since there was no specific zone indicated therein.

The SLC has eliminated the boundary and allotted the specific land uses within the EPZ boundary by considering the characteristic of the land. Consequently the RPG-21 will not have the EPZ boundary and no reference shall be made to the EPZ boundary after the notification of RPG-21.

## **2.4 COASTAL REGULATION ZONE (CRZ) AREAS**

SLC has demarcated certain uncultivated/uncultivable lands for development in CRZ areas in these 4 talukas. However, this is subject to clearances obtained from Agricultural Dept. regarding the unsuitability of land for agriculture or cultivation.

## **2.5 TOURISM**

**2.5.1 Critical Area Plans:** The SLC reiterates the need for preparation and implementation of the critical area plans for tourism hot spots (over-exploited tourist areas - beaches, heritage sites and pilgrimage destinations). In these areas, infrastructure development (sewage, waste, roads) need to be urgently upgraded. The tourist hot spots in need of critical area plans shall be listed and elaborated in the Comprehensive Report.

**2.5.2 Eco-tourism:** Though there were proposals for eco- tourism across all 4 talukas, the SLC has recommended only one site for eco-tourism in Salcete taluka.

A Tourism Master Plan should be prepared keeping in mind the potential of the tourism sector and its sustainability and proposals of the tourism master plan including infrastructure shall conform to the eco-tourism policy detailed out in Release One. Further details will be elaborated in the Comprehensive Report.

## **2.6 AFFORDABLE HOUSING**

The SLC has demarcated pockets of settlement areas aimed at providing low-cost housing, industrial/migrant workers housing, 20 point program housing etc and these areas are accordingly designated in the surface utilisation plans. These areas shall be taken for development by either the agencies of the government mandated to take up such schemes, or by the owners of such lands – collectively or individually depending on whether the land is owned by individuals or by comunidades. This is aimed at addressing the current gap that exists in the supply vs. demand for affordable housing.

## **2.7 TOWN PLANNING SCHEMES (TPS)**

Two TP Schemes have been proposed, one around Colvale/Camurlim near Mapusa town so as to absorb the pressures of the town and the second at Tivim-Sirsaim for educational/ institutional purposes.

## **2.8 OPEN SPACES**

The open spaces of approved subdivisions above 4000 sq m have been mapped based on inputs received from branch offices of Town & City Planning Department. However, the open spaces which have been inadvertently missed

out shall be incorporated by the Town & City Planning Department in consultation with the TCP Board.

## **2.9 CONSERVATION AREA**

The Tiswadi taluka has a 'Preservation/conservation area', at Old Goa which has been notified as a World Heritage Site by UNESCO. In order to maintain this historical site with heritage structures of historical value and to ensure preservation of un-excavated sites, etc. the SLC has studied the details of a master plan submitted to the Tourism Dept by a group of conservation architects and planners. Based on their Heritage Conservation Management Plan, the locations of un-excavated sites are indicated in the plan along with important heritage trails, other heritage structures around the complex and a boundary indicating the Heritage/Preservation Area is marked on the plan.

## **2.10 PLAN REVIEW PROCESS**

- 2.10.1 The review of the Regional Plan 2021 shall be done by following the process and the procedure contained in the Goa Town & Country Planning Act, 1974. The Government shall consult the local bodies while reviewing the Plans of the respective areas.
- 2.10.2 The Draft RPG-21 had envisaged a varying period of review of the RPG-21 at intervals of 3 years from the date of final notification, followed by another review after 4 years and then every 5 years thereafter (*see Draft RPG- Chapter 1.7, Step 8A, p.13*). However, in order to standardise the review process, it has been recommended that there will be a limited review of RPG-21 after every 5 years

from the date of final notification of the RPG -21. The process of review may be elaborated in the Comprehensive Report of the RPG-21.

### 3. ADDENDUM AND ERRATA

#### 3.1 ADDENDUM

Eco-tourism: Only hotels and resorts will be permitted within eco-tourism within this zone. The procedure for approval will be elaborated in the Comprehensive Report of the RPG-21. (Final Report, RPG-21, Rel One: 4.2.2.a 5.)

#### 3.2 ERRATA

- 3.2.1 Page 13      Para 2 Pt. 24 NH□A shall read as NH4A
- 3.2.2 Page 17      Pt. 3. □ shall read as 3.4
- 3.2.3 Page 17      Pt. □1.5 **Introduction Of Carbon Credit Policy** “The last 50 years.... standard.” (20-22) shall read as part of **New And Modified Policies** at 3.5
- 3.2.4 Page 20      Pt□1.5 shall read as pt.3.5
- 3.2.5 Page 93.      Broad Land Use for Sanguem taluka (Final Report, RPG-21, Release Two) shall be read as per **Appendix XI** of this report.
- 3.2.6 Page 98.      Appendix XI: MIZ and Facilities proposed, Ponda Taluka (Final Report, RPG-21, Release Two) shall be read as per **Appendix XII** of this report.

## **APPENDICES**

<b>APPENDIX I</b>	Notification of Release 2
<b>APPENDIX II</b>	Usgao- Gangem SUP Notification
<b>APPENDIX III</b>	Land Use Tables: Bardez, Tiswadi, Mormogao and Salcete
<b>APPENDIX IV</b>	Taluka-Wise Provision of MIZ and Facilities based on public inputs (Bardez, Tiswadi, Mormogao and Salcete)
<b>APPENDIX V</b>	Bardez Surface Utilisation Plan
<b>APPENDIX VI</b>	Tiswadi Surface Utilisation Plan
<b>APPENDIX VII</b>	Mormogao Surface Utilisation Plan
<b>APPENDIX VIII</b>	Salcete Surface Utilisation Plan
<b>APPENDIX IX</b>	Final Classification of Settlements (Table)
<b>APPENDIX X</b>	Map showing Final Classification of Settlements
<b>APPENDIX XI</b>	Land Use Table: Sanguem Taluka
<b>APPENDIX XII</b>	Provision of MIZ and Facilities based on public inputs: Sattari Taluka

## **APPENDIX I**

### Notification of Release 2

## Department of Town &amp; Country Planning

--

**Notification**

No. 29/8/TCP/2011/RP-21/3742

Whereas, the Regional Plan 2001 A.D. for the State of Goa has been published in the Official Gazette, Series III No. 37 dated 11-12-1986, for the horizon year 2001;

And Whereas, the Government is of the opinion that revision of said Regional Plan 2001 is necessary and accordingly directed Chief Town Planner to undertake the revision of the said Regional Plan 2001;

And Whereas, the Government vide Notification No. 29/8/TCP/Pt. file/Task Force/R.P./2007/3353 dated 4-10-2007, published in the Official Gazette (Extraordinary No. 3) Series II No. 27 dated 5-10-2007 and Notification No. 29/8/TCP/Pt. file/Task Force/R.P./07-08/812 dated 26-02-2008, published in the Official Gazette (Extraordinary No. 4) Series II No. 47 dated 26-02-2008, had appointed a Committee to be called Task Force for guiding the preparation of the Regional Plan for Goa for the horizon year 2021;

And Whereas, the Task Force has carried out necessary survey/studies and deliberations through secondary data and consultative process and submitted the draft Regional Plan for Goa 2021 to the Chief Town Planner;

And Whereas, as per the directions of the Government, the Chief Town Planner placed the said draft Regional Plan for Goa 2021 before the Town and Country Planning Board for its consideration;

And Whereas, the Town and Country Planning Board in its 133rd meeting held on 29-9-2008 has considered and approved the draft Regional Plan for Goa 2021;

And Whereas, in exercise of the powers conferred by section 13 of the Goa Town and Country Planning Act, 1974 (Goa Act 21 of 1975), the draft revised Regional Plan for Goa — 2021 was notified in the Official Gazette, vide Notification No. 29/8/TCP/2008/RP-21/PT/3743 dated 08-10-2008, published in the Official Gazette, Series III No. 29 dated 16-10-2008, inviting comments in writing from the public on the said draft revised Regional Plan for Goa — 2021;

And Whereas, the comments received from the public as well as from the local bodies were studied and considered by the State Level Committee constituted by the Government for the purpose vide Order No. 29/8/TCP/TF/RP-2021/VPM/08/4008 dated 29-10-2008, No. 29/8/TCP/TF/RP-2021/VPM/08/4507 dated 28-11-2008 and No. 29/8/TCP/TF/RP-2021/VPM/08-09/738 dated 12-2-2009 and the Regional Plan for Goa — 2021 (Surface Utilization Plan) pertaining to Bicholim Taluka alongwith Settlement Level Plans of seventeen Village Panchayats and two Municipal Councils, Dharbandora Taluka alongwith Settlement Level Plans of five Village Panchayats and Sanguem Taluka alongwith Settlement Level Plan of seven Village Panchayats and one Municipal Council with Release-II report was finalized (hereinafter referred to as the "said areas");

And Whereas, the Town and Country Planning Board in its 138th meeting held on 30-06-2011 has considered and approved Regional Plan for Goa — 2021 (Surface Utilization Plan) in respect of the said areas;

And Whereas, the Government has approved the Regional Plan for Goa — 2021 (Part) in respect of Bicholim Taluka alongwith Settlement Level Plans of seventeen Village Panchayats and two Municipal Councils, Dharbandora Taluka alongwith Settlement Level Plans of five Village Panchayats and Sanguem Taluka alongwith Settlement Level Plans of seven Village Panchayats and one Municipal Council with Release-II report.

Now, therefore, in exercise of the powers conferred by section 15 read with section 17 of the Goa Town and Country Planning Act, 1974 (Goa Act 21 of 1975), I, Shri S. T. Puttaraju, Chief Town Planner, Government of Goa, hereby notify the Regional Plan for Goa — 2021 (Part) in respect of Bicholim Taluka alongwith Settlement Level Plans of seventeen Village Panchayats and two Municipal Councils, Dharbandora Taluka alongwith Settlement Level Plans of five Village Panchayats and Sanguem Taluka alongwith Settlement Level Plans of seven Village Panchayats and one Municipal Council with release-II report as approved by the Government.

On and from the date of publication of this Notification in the Official Gazette, all development programme undertaken by any private institution or by any other person within the area covered under said Regional Plan for Goa — 2021 (Part), shall conform to the provisions of such Regional Plan. However, public projects/schemes/development works, undertaken by the Central Government or by the Government of Goa, shall be in conformity

with the rules framed and procedures laid down by the Government of Goa for such projects/schemes/development works.

No person shall undertake any work of development in contravention of any provisions of the said Regional Plan as in force, except the projects/schemes/development works undertaken by the Central Government or the Government of Goa, either by himself or through his servant or agent or any other person and all such development work shall be in conformity with the provisions of the said Regional Plan.

The Regional Plan for Goa — 2021 (Part) in respect of Bicholim Taluka alongwith Settlement Level Plans of seventeen Village Panchayats and two Municipal Councils, Dharbandora Taluka alongwith Settlement Level Plans of five Village Panchayats and Sanguem Taluka alongwith Settlement Level Plans of seven Village Panchayats and one Municipal Council with Release-II report are available for the purpose of inspection in the office of the (a) Town and Country Planning Department (Headquarters), Dempo Tower, 2nd Floor, Patto Plaza, Panaji-Goa, (b) North Goa District Office, Town and Country Planning Department, 2nd floor, Government Office Complex, Mapusa, Bardez-Goa, (c) South Goa District Office, Town and Country Planning Department, Osia Complex, 4th Floor, Margao-Goa, (d) Bicholim Taluka Office, Town and Country Planning Department, PMC Commercial Complex, Bicholim-Goa and (e) Quepem Taluka Office, Town and Country Planning Department, Government Office Complex, Quepem Town, Goa.

By order and in the name of the Governor of Goa.

S. T. Puttaraju, Chief Town Planner and Ex Officio Joint Secretary.

Panaji, 9th September, 2011.

◆◆◆

## **APPENDIX II**

Usgao- Gangem SUP Notification

## Department of Town &amp; Country Planning

**Notification**

29/8/TCP/2011/RP-21/Pt. file/3983

Whereas, the Chief Town Planner, Government of Goa, vide Notification No. 29/8/TCP/2010/RP-21/1952 dated 26-04-2011, published in the Official Gazette, Series I No. 4 dated 28-04-2011, notified the Regional Plan for Goa-2021 (Part) in respect of Satari Taluka along with Settlement Level Plan of twelve Village Panchayats and one Municipal Council, Ponda Taluka along with Settlement Level Plan of eighteen Village Panchayats and Quepem Taluka along with Settlement Level Plans of eleven Village Panchayats and two Municipal Councils with land use table as approved by the Government (hereinafter called said "Regional Plan");

And Whereas, the said Regional Plan (Surface Utilization Plan) in respect of said talukas along with Settlement Level Plans and land use table were made available for the purpose of inspection in the offices of Town and Country Planning Department as specified therein;

And whereas, the Regional Plan of Ponda Taluka was notified in respect of only eighteen Village Panchayats as villages "Gangem" and "Usgao" of Usgao Village Panchayat were part of Darbandora Taluka in terms of Notification No. 16/15/2010/RD dated 16-03-2011, published in the Official Gazette, Series I No. 51 dated 17-03-2011;

And Whereas, the Government vide Notification No. 16-15-2010/RD/2343 dated 20-05-2011, published in the Official Gazette, Series I No. 8 dated 26-05-2011, omitted the Usgao and Gangem villages from the Darbandora Taluka and included them in the Ponda Taluka.

Now, therefore, in exercise of the powers conferred by section 15 read with section 17 of the Goa, Daman and Diu Town and Country Planning Act, 1974 (Goa Act 21 of 1975), and in partial modification of the Notification No. 29/8/TCP/2010/RP-21/1952 dated 26-04-2011, published in the Official Gazette, Series I No. 4 dated 28-04-2011, I, Shri S. T. Puttaraju, Chief Town Planner, Government of Goa, hereby notify the Regional Plan for Goa-2021 (Part) in respect of Ponda Taluka along with Settlement Level Plan of nineteen Village Panchayats including Usgao Village Panchayat with land use table as approved by the Government (hereinafter called "said area").

On and from the date of publication of this Notification in the Official Gazette, all development programme undertaken by any private institution or by any other person within the said area shall conform to the provisions of such Regional Plan. However, public projects/schemes/development works, undertaken by the Central Government or by the State Government, shall be in conformity with the rules framed and procedures laid down by the Government for such projects/schemes/development works.

No person shall undertake any work of development in contravention of any provision of the Regional Plan as in force, except the projects/schemes/development works undertaken by the Central Government or the State Government, either by himself or through his servant or agent or any other person and all such development work shall be in conformity with the provisions of the Regional Plan.

The Regional Plan for Goa-2021 (Part) (Surface Utilization Plan) in respect of Ponda

Taluka along with Settlement Level Plan of nineteen Village Panchayats including Usgao Village Panchayat with land use table are available for the purpose of inspection in the office of the (a) Town and Country Planning Department (Headquarters), Dempo Tower, 2nd Floor, Patto Plaza, Panaji-Goa, (b) Ponda Taluka Office, Town and Country Planning

Department, Government Building, 2nd Floor, Near Municipal Garden, Ponda-Goa.

By order and in the name of the Governor of Goa.

*S. T. Puttaraju*, Chief Town Planner & ex officio Joint Secretary.

Panaji, 27th September, 2011.

### **APPENDIX III**

Land Use Tables: Bardez, Tiswadi, Mormogao and Salcete

TALUKA: BARDEZ  
PANCHAYAT WISE BROAD LANDUSE TABLE

PANCHAYAT NAMES	V.P. ALDONA		V.P. ANJUNA-CAISUA		V.P. ARPORA- NAGOA		V.P. ASSAGAO	
Area as per census (Ha)	1543		1150		656		1009	
	AREA IN HECTARES	% OF TOTAL PANCHAYAT	AREA IN HECTARES	% OF TOTAL PANCHAYAT	AREA IN HECTARES	% OF TOTAL PANCHAYAT	AREA IN HECTARES	% OF TOTAL PANCHAYAT
<b>ECO - 1</b>								
FOREST (Protected/reserved/ national park/wild life)	0.00	0.00	0.00	0.00	0.00	0.00	0.00	0.00
MANGROVE FOREST	52.71	3.42	0.00	0.00	1.12	0.17	0.00	0.00
PRIVATE FOREST	0.00	0.00	0.00	0.00	40.56	6.18	237.22	23.50
WATER BODIES/ nalla/ponds	204.23	13.24	39.52	3.44	17.56	2.68	81.57	8.08
PADDY FIELD/KHAZAN LANDS	681.80	44.20	246.01	21.39	150.82	22.99	0.00	0.00
<b>ECO - 2</b>								
ORCHARD	80.24	5.20	56.11	4.88	52.36	7.98	108.63	10.76
NATURAL COVER	0.00	0.00	121.72	10.58	108.35	16.52	240.65	23.84
CULTIVABLE	0.00	0.00	21.51	1.87	15.07	2.30	4.70	0.47
SALT PANS	0.00	0.00	0.00	0.00	27.08	4.13	0.00	0.00
FISH FARM / MUD FLATS	0.00	0.00	0.00	0.00	0.00	0.00	0.00	0.00
SETTLEMENT	485.47	31.47	635.00	55.21	232.92	35.51	304.78	30.19
INSTITUTIONAL	2.26	0.15	0.00	0.00	0.00	0.00	12.63	1.25
INDUSTRY	0.00	0.00	0.00	0.00	0.00	0.00	0.00	0.00
MIZ	0.00	0.00	0.00	0.00	0.00	0.00	0.00	0.00
TRANSPORTATION	35.80	2.32	30.31	2.64	10.08	1.54	19.28	1.91
MISCELLANEOUS	0.00	0.00	0.00	0.00	0.00	0.00	0.00	0.00
<b>GRAND TOTAL</b>	<b>1543</b>	<b>100.00</b>	<b>1150</b>	<b>100.00</b>	<b>656</b>	<b>100.00</b>	<b>1009</b>	<b>100.00</b>

AREAS ARE GENERATED FROM PROPOSED SURFACE UTILISATION PLAN

TALUKA: BARDEZ  
PANCHAYAT WISE BROAD LANDUSE TABLE

PANCHAYAT NAMES	V.P. ASSONORA		V.P. BASTORA		V.P. CALANGUTE		V.P. CAMURLIM	
Area as per census (Ha)	459		322		942		755	
	AREA IN HECTARES	% OF TOTAL PANCHAYAT	AREA IN HECTARES	% OF TOTAL PANCHAYAT	AREA IN HECTARES	% OF TOTAL PANCHAYAT	AREA IN HECTARES	% OF TOTAL PANCHAYAT
<b>ECO - 1</b>								
FOREST (Protected/reserved/ national park/wild life)	0.00	0.00	0.00	0.00	0.00	0.00	0.00	0.00
MANGROVE FOREST	29.39	6.41	26.78	8.31	1.61	0.17	15.11	2.00
PRIVATE FOREST	0.00	0.00	0.00	0.00	0.00	0.00	0.00	0.00
WATER BODIES/ nalla/ponds	20.15	4.39	19.91	6.18	22.62	2.40	119.56	15.83
PADDY FIELD/KHAZAN LANDS	59.29	12.93	158.08	49.06	26.50	2.81	53.76	7.12
<b>ECO - 2</b>								
ORCHARD	142.85	31.15	2.35	0.73	330.13	35.06	215.66	28.56
NATURAL COVER	55.69	12.14	18.23	5.66	90.73	9.64	165.57	21.92
CULTIVABLE	7.67	1.67	6.00	1.86	2.49	0.26	0.00	0.00
SALT PANS	0.00	0.00	0.00	0.00	11.81	1.25	0.00	0.00
FISH FARM / MUD FLATS	0.00	0.00	0.00	0.00	0.00	0.00	0.00	0.00
SETTLEMENT	122.45	26.70	79.91	24.80	435.40	46.24	172.10	22.79
INSTITUTIONAL	4.38	0.95	1.68	0.52	4.16	0.44	0.00	0.00
INDUSTRY	3.97	0.86	0.78	0.24	0.00	0.00	0.00	0.00
MIZ	4.10	0.89	0.00	0.00	0.00	0.00	5.09	0.67
TRANSPORTATION	8.65	1.89	8.51	2.64	16.08	1.71	8.33	1.10
MISCELLANEOUS	0.00	0.00	0.00	0.00	0.00	0.00	0.00	0.00
<b>GRAND TOTAL</b>	<b>459</b>	<b>100.00</b>	<b>322</b>	<b>100.00</b>	<b>942</b>	<b>100.00</b>	<b>755</b>	<b>100.00</b>

AREAS ARE GENERATED FROM PROPOSED SURFACE UTILISATION PLAN

TALUKA: BARDEZ  
PANCHAYAT WISE BROAD LANDUSE TABLE

PANCHAYAT NAMES	V.P. CANDOLIM		V.P. COLVALE		V.P. GUIRIM		V.P. MOIRA	
Area as per census (Ha)	824		1013		414		394	
	AREA IN HECTARES	% OF TOTAL PANCHAYAT	AREA IN HECTARES	% OF TOTAL PANCHAYAT	AREA IN HECTARES	% OF TOTAL PANCHAYAT	AREA IN HECTARES	% OF TOTAL PANCHAYAT
<b>ECO - 1</b>								
FOREST (Protected/reserved/ national park/wild life)	0.00	0.00	0.00	0.00	0.00	0.00	0.00	0.00
MANGROVE FOREST	54.66	6.63	43.84	4.33	0.00	0.00	12.66	3.21
PRIVATE FOREST	0.00	0.00	0.00	0.00	0.00	0.00	0.00	0.00
WATER BODIES/ nalla/ponds	67.54	8.20	105.41	10.41	20.42	4.94	53.20	13.50
PADDY FIELD/KHAZAN LANDS	71.85	8.72	123.61	12.21	235.00	56.81	107.63	27.30
<b>ECO - 2</b>								
ORCHARD	61.58	7.47	254.99	25.18	3.63	0.88	5.03	1.28
NATURAL COVER	149.16	18.10	11.97	1.18	9.76	2.36	10.29	2.61
CULTIVABLE	17.47	2.12	104.26	10.30	1.58	0.38	0.00	0.00
SALT PANS	0.00	0.00	0.00	0.00	0.00	0.00	0.00	0.00
FISH FARM / MUD FLATS	0.00	0.00	0.00	0.00	0.00	0.00	0.00	0.00
SETTLEMENT	374.73	45.47	211.05	20.84	129.33	31.27	200.20	50.79
INSTITUTIONAL	1.07	0.13	70.50	6.96	0.00	0.00	0.00	0.00
INDUSTRY	0.00	0.00	56.82	5.61	0.92	0.22	0.00	0.00
MIZ	4.43	0.54	0.00	0.00	0.00	0.00	0.00	0.00
TRANSPORTATION	21.56	2.62	30.14	2.98	13.01	3.15	5.18	1.31
MISCELLANEOUS	0.00	0.00	0.00	0.00	0.00	0.00	0.00	0.00
<b>GRAND TOTAL</b>	<b>824</b>	<b>100.00</b>	<b>1013</b>	<b>100.00</b>	<b>414</b>	<b>100.00</b>	<b>394</b>	<b>100.00</b>

AREAS ARE GENERATED FROM PROPOSED SURFACE UTILISATION PLAN

TALUKA: BARDEZ  
PANCHAYAT WISE BROAD LANDUSE TABLE

PANCHAYAT NAMES	V.P. NACHINOLA		V.P. NANDORA		V.P. NERUL		V.P. OXEL	
Area as per census (Ha)	253		483		446		256	
	AREA IN HECTARES	% OF TOTAL PANCHAYAT	AREA IN HECTARES	% OF TOTAL PANCHAYAT	AREA IN HECTARES	% OF TOTAL PANCHAYAT	AREA IN HECTARES	% OF TOTAL PANCHAYAT
<b>ECO - 1</b>								
FOREST (Protected/reserved/ national park/wild life)	0.00	0.00	0.00	0.00	0.00	0.00	0.00	0.00
MANGROVE FOREST	0.00	0.00	0.00	0.00	12.80	2.87	22.83	8.91
PRIVATE FOREST	15.68	6.21	0.00	0.00	0.00	0.00	0.00	0.00
WATER BODIES/ nalla/ponds	0.98	0.39	41.53	8.60	71.35	16.01	15.08	5.89
PADDY FIELD/KHAZAN LANDS	18.70	7.40	32.56	6.74	105.99	23.78	84.88	33.14
<b>ECO - 2</b>								
ORCHARD	2.73	1.08	154.76	32.05	50.35	11.29	21.45	8.38
NATURAL COVER	42.82	16.95	124.41	25.77	25.10	5.63	41.00	16.01
CULTIVABLE	0.00	0.00	77.65	16.08	0.00	0.00	0.22	0.09
SALT PANS	0.00	0.00	0.00	0.00	29.00	6.51	0.00	0.00
FISH FARM / MUD FLATS	0.00	0.00	0.00	0.00	0.00	0.00	0.00	0.00
SETTLEMENT	130.03	51.48	45.62	9.45	134.36	30.14	67.25	26.26
INSTITUTIONAL	1.80	0.71	0.00	0.00	11.00	2.47	0.39	0.15
INDUSTRY	0.00	0.00	0.00	0.00	0.00	0.00	0.00	0.00
MIZ	2.53	1.00	0.00	0.00	0.00	0.00	0.00	0.00
TRANSPORTATION	37.30	14.77	6.31	1.31	5.83	1.31	3.02	1.18
MISCELLANEOUS	0.00	0.00	0.00	0.00	0.00	0.00	0.00	0.00
<b>GRAND TOTAL</b>	<b>253</b>	<b>100.00</b>	<b>483</b>	<b>100.00</b>	<b>446</b>	<b>100.00</b>	<b>256</b>	<b>100.00</b>

AREAS ARE GENERATED FROM PROPOSED SURFACE UTILISATION PLAN

TALUKA: BARDEZ  
PANCHAYAT WISE BROAD LANDUSE TABLE

PANCHAYAT NAMES	V.P. PARRA		V.P. PENHA-DE-FRANCA		V.P. PILERNE-MARRA		V.P. PIRNA	
Area as per census (Ha)	510		504		887		987	
	AREA IN HECTARES	% OF TOTAL PANCHAYAT	AREA IN HECTARES	% OF TOTAL PANCHAYAT	AREA IN HECTARES	% OF TOTAL PANCHAYAT	AREA IN HECTARES	% OF TOTAL PANCHAYAT
<b>ECO - 1</b>								
FOREST (Protected/reserved/ national park/wild life)	0.00	0.00	0.00	0.00	0.00	0.00	0.00	0.00
MANGROVE FOREST	0.00	0.00	0.00	0.00	26.56	3.00	0.00	0.00
PRIVATE FOREST	0.00	0.00	55.54	11.02	22.18	2.50	0.00	0.00
WATER BODIES/ nalla/ponds	4.80	0.94	90.64	17.99	35.73	4.03	15.35	1.55
PADDY FIELD/KHAZAN LANDS	248.46	48.72	13.08	2.60	170.52	19.23	106.83	10.82
<b>ECO - 2</b>								
ORCHARD	10.92	2.14	13.16	2.61	97.17	10.96	447.28	45.30
NATURAL COVER	81.16	15.92	25.37	5.04	86.21	9.72	117.51	11.90
CULTIVABLE	5.26	1.03	0.00	0.00	0.00	0.00	155.29	15.73
SALT PANS	0.00	0.00	0.00	0.00	13.81	1.56	0.00	0.00
FISH FARM / MUD FLATS	0.00	0.00	0.00	0.00	0.00	0.00	0.00	0.00
SETTLEMENT	152.74	29.95	253.30	50.28	348.89	39.35	137.56	13.93
INSTITUTIONAL	1.04	0.20	38.71	7.68	2.08	0.23	0.23	0.02
INDUSTRY	0.00	0.00	0.50	0.10	52.73	5.95	0.00	0.00
MIZ	0.00	0.00	0.00	0.00	0.00	0.00	0.00	0.00
TRANSPORTATION	5.58	1.09	13.49	2.68	30.65	3.46	7.42	0.75
MISCELLANEOUS	0.00	0.00	0.00	0.00	0.00	0.00	0.00	0.00
<b>GRAND TOTAL</b>	<b>510</b>	<b>100.00</b>	<b>504</b>	<b>100.00</b>	<b>887</b>	<b>100.00</b>	<b>987</b>	<b>100.00</b>

AREAS ARE GENERATED FROM PROPOSED SURFACE UTILISATION PLAN

TALUKA: BARDEZ  
PANCHAYAT WISE BROAD LANDUSE TABLE

PANCHAYAT NAMES	V.P. POMBURPA-OLAULIM		V.P. REIS-MAGOS		V.P. REVORA		V.P. SALIGAO	
Area as per census (Ha)	657		504		774		601	
	AREA IN HECTARES	% OF TOTAL PANCHAYAT	AREA IN HECTARES	% OF TOTAL PANCHAYAT	AREA IN HECTARES	% OF TOTAL PANCHAYAT	AREA IN HECTARES	% OF TOTAL PANCHAYAT
<b>ECO - 1</b>								
FOREST (Protected/reserved/national park/wild life)	0.00	0.00	0.00	0.00	0.00	0.00	0.00	0.00
MANGROVE FOREST	3.92	0.60	0.00	0.00	0.00	0.00	0.00	0.00
PRIVATE FOREST	56.53	8.60	55.63	11.03	0.00	0.00	0.00	0.00
WATER BODIES/ nalla/ponds	39.05	5.94	68.65	13.62	40.15	5.19	5.33	0.89
PADDY FIELD/KHAZAN LANDS	125.63	19.12	26.75	5.31	99.62	12.88	241.81	40.24
<b>ECO - 2</b>								
ORCHARD	110.27	16.78	97.63	19.36	221.45	28.63	47.41	7.89
NATURAL COVER	179.73	27.35	73.98	14.67	39.93	5.16	111.23	18.51
CULTIVABLE	0.00	0.00	0.00	0.00	185.31	23.95	0.54	0.09
SALT PANS	0.00	0.00	0.00	0.00	0.00	0.00	0.00	0.00
FISH FARM / MUD FLATS	0.00	0.00	0.00	0.00	0.00	0.00	0.00	0.00
SETTLEMENT	130.97	19.93	166.61	33.05	149.35	19.31	160.91	26.78
INSTITUTIONAL	0.00	0.00	0.33	0.07	3.80	0.49	20.95	3.49
INDUSTRY	0.00	0.00	0.71	0.14	0.00	0.00	0.00	0.00
MIZ	0.00	0.00	0.00	0.00	2.74	0.35	0.00	0.00
TRANSPORTATION	11.02	1.68	13.86	2.75	31.22	4.04	12.71	2.11
MISCELLANEOUS	0.00	0.00	0.00	0.00	0.00	0.00	0.00	0.00
<b>GRAND TOTAL</b>	<b>657</b>	<b>100.00</b>	<b>504</b>	<b>100.00</b>	<b>774</b>	<b>100.00</b>	<b>601</b>	<b>100.00</b>

AREAS ARE GENERATED FROM PROPOSED SURFACE UTILISATION PLAN

TALUKA: BARDEZ  
PANCHAYAT WISE BROAD LANDUSE TABLE

PANCHAYAT NAMES	V.P. SALVADOR-DO-MUNDO		V.P. SANGOLDA		V.P. SIOLIM-MARNA		V.P. SIOLIM SODIEM	
Area as per census (Ha)	1230		340		342		1139	
	AREA IN HECTARES	% OF TOTAL PANCHAYAT	AREA IN HECTARES	% OF TOTAL PANCHAYAT	AREA IN HECTARES	% OF TOTAL PANCHAYAT	AREA IN HECTARES	% OF TOTAL PANCHAYAT
<b>ECO - 1</b>								
FOREST (Protected/reserved/national park/wild life)	0.00	0.00	0.00	0.00	0.00	0.00	0.00	0.00
MANGROVE FOREST	47.39	3.85	0.00	0.00	0.00	0.00	13.82	1.21
PRIVATE FOREST	89.59	7.28	0.00	0.00	11.29	3.30	4.46	0.39
WATER BODIES/ nalla/ponds	159.19	12.94	9.24	2.72	6.33	1.85	46.84	4.11
PADDY FIELD/KHAZAN LANDS	244.19	19.85	156.75	46.13	63.34	18.52	195.06	17.12
<b>ECO - 2</b>								
ORCHARD	11.16	0.91	5.50	1.62	10.42	3.05	66.86	5.87
NATURAL COVER	379.78	30.87	31.98	9.41	123.75	36.18	296.21	26.00
CULTIVABLE	0.00	0.00	1.55	0.46	26.70	7.81	23.53	2.07
SALT PANS	0.58	0.05	0.00	0.00	0.00	0.00	0.00	0.00
FISH FARM / MUD FLATS	0.00	0.00	0.00	0.00	0.00	0.00	0.00	0.00
SETTLEMENT	262.91	21.37	123.54	36.36	89.05	26.03	471.27	41.36
INSTITUTIONAL	1.20	0.10	0.64	0.19	1.74	0.51	1.60	0.14
INDUSTRY	9.45	0.77	0.33	0.10	1.18	0.35	4.72	0.41
MIZ	3.96	0.32	0.00	0.00	3.54	1.03	0.00	0.00
TRANSPORTATION	20.87	1.70	10.25	3.02	4.71	1.38	14.99	1.32
MISCELLANEOUS	0.00	0.00	0.00	0.00	0.00	0.00	0.00	0.00
<b>GRAND TOTAL</b>	<b>1230</b>	<b>100.00</b>	<b>340</b>	<b>100.00</b>	<b>342</b>	<b>100.00</b>	<b>1139</b>	<b>100.00</b>

AREAS ARE GENERATED FROM PROPOSED SURFACE UTILISATION PLAN

TALUKA: BARDEZ  
PANCHAYAT WISE BROAD LANDUSE TABLE

PANCHAYAT NAMES	V.P. SIRSAIM		V.P. SOCORRO		V.P. TIVIM		V.P. UCASSAIM-PALIEM-PUNOLA	
Area as per census (Ha)	378		1252		1959		476	
	AREA IN HECTARES	% OF TOTAL PANCHAYAT	AREA IN HECTARES	% OF TOTAL PANCHAYAT	AREA IN HECTARES	% OF TOTAL PANCHAYAT	AREA IN HECTARES	% OF TOTAL PANCHAYAT
<b>ECO - 1</b>								
FOREST (Protected/reserved/ national park/wild life)	0.00	0.00	0.00	0.00	0.00	0.00	0.00	0.00
MANGROVE FOREST	3.21	0.85	0.00	0.00	99.85	5.10	6.30	1.32
PRIVATE FOREST	0.00	0.00	65.75	5.25	14.83	0.76	0.00	0.00
WATER BODIES/ nalla/ponds	9.10	2.41	16.94	1.35	130.08	6.64	38.26	8.04
PADDY FIELD/KHAZAN LANDS	37.17	9.83	265.97	21.25	418.78	21.37	173.85	36.54
<b>ECO - 2</b>								
ORCHARD	111.55	29.50	108.36	8.66	353.56	18.05	72.38	15.21
NATURAL COVER	21.46	5.67	288.86	23.07	33.00	1.68	26.74	5.62
CULTIVABLE	10.74	2.84	0.00	0.00	257.73	13.15	0.00	0.00
SALT PANS	0.00	0.00	0.00	0.00	0.00	0.00	0.00	0.00
FISH FARM / MUD FLATS	0.00	0.00	0.00	0.00	0.00	0.00	0.00	0.00
SETTLEMENT	157.90	41.75	462.29	36.93	550.36	28.09	145.53	30.59
INSTITUTIONAL	1.49	0.39	2.19	0.17	35.68	1.82	1.81	0.38
INDUSTRY	2.79	0.74	3.10	0.25	4.86	0.25	-1.81	-0.38
MIZ	0.00	0.00	0.00	0.00	5.01	0.26	4.89	1.03
TRANSPORTATION	22.80	6.03	38.40	3.07	55.57	2.84	7.86	1.65
MISCELLANEOUS	0.00	0.00	0.00	0.00	0.00	0.00	0.00	0.00
<b>GRAND TOTAL</b>	<b>378</b>	<b>100.00</b>	<b>1252</b>	<b>100.00</b>	<b>1959</b>	<b>100.00</b>	<b>476</b>	<b>100.00</b>

AREAS ARE GENERATED FROM PROPOSED SURFACE UTILISATION PLAN

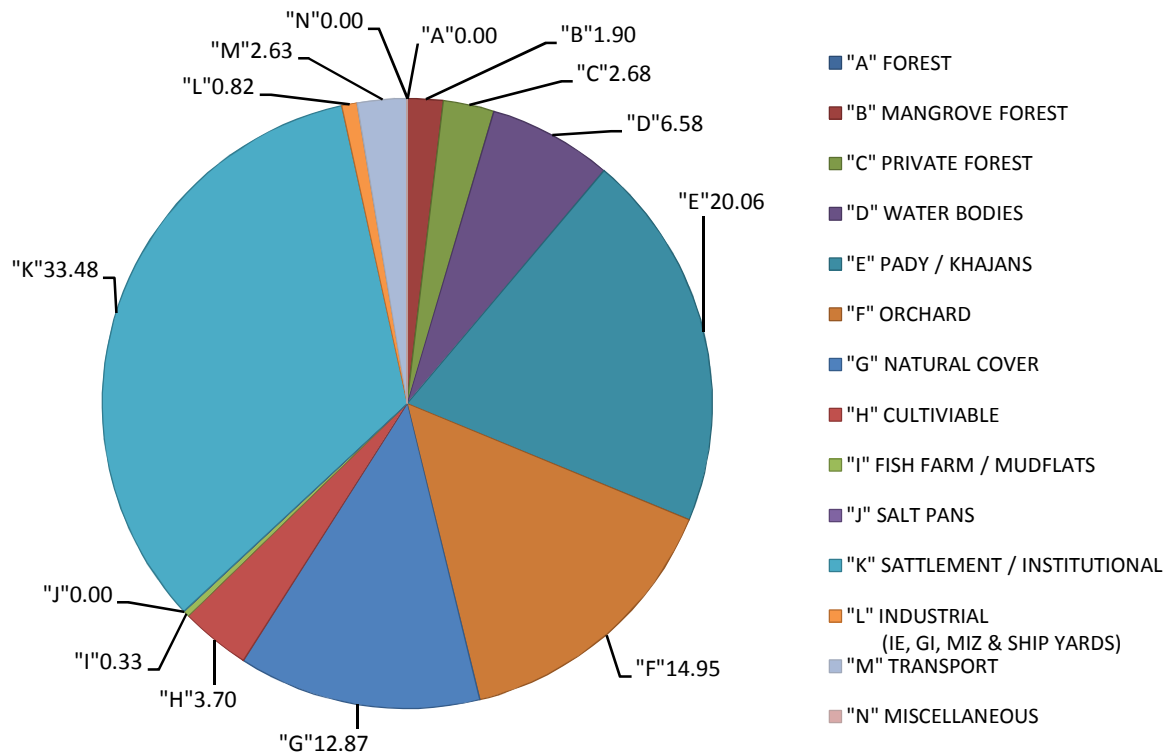
TALUKA: BARDEZ  
PANCHAYAT WISE BROAD LANDUSE TABLE

PANCHAYAT NAMES	V.P. VERLA-CANCA		MAPUSA MCL		TOTAL TALUKA	
Area as per census (Ha)	438		1136		25031	
	AREA IN HECTARES	% OF TOTAL PANCHAYAT	AREA IN HECTARES	% OF TOTAL MCL	AREA IN HECTARES	% OF TOTAL
<b>ECO - 1</b>						
FOREST (Protected/reserved/ national park/wild life)	0.00	0.00	0.00	0.00	0.00	0.00
MANGROVE FOREST	0.00	0.00	0.00	0.00	474.56	1.90
PRIVATE FOREST	2.25	0.51	0.00	0.00	671.51	2.68
WATER BODIES/ nalla/ponds	3.05	0.70	27.25	2.40	1646.62	6.58
PADDY FIELD/KHAZAN LANDS	128.73	29.39	148.74	13.10	5021.72	20.06
<b>ECO - 2</b>						
ORCHARD	26.87	6.13	388.14	34.17	3742.93	14.95
NATURAL COVER	88.72	20.26	0.00	0.00	3221.04	12.87
CULTIVABLE	1.08	0.25	0.00	0.00	926.36	3.70
SALT PANS	0.00	0.00	0.00	0.00	82.29	0.33
FISH FARM / MUD FLATS	0.00	0.00	0.00	0.00	0.00	0.00
SETTLEMENT	180.68	41.25	414.41	36.49	8118.88	32.43
INSTITUTIONAL	0.00	0.00	37.16	3.27	260.49	1.04
INDUSTRY	0.00	0.00	28.39	2.50	169.46	0.68
MIZ	0.00	0.00	0.00	0.00	36.28	0.14
TRANSPORTATION	6.64	1.52	91.73	8.08	659.18	2.63
MISCELLANEOUS	0.00	0.00	0.00	0.00	0.00	0.00
<b>GRAND TOTAL</b>	<b>438</b>	<b>100.00</b>	<b>1136</b>	<b>100.00</b>	<b>25031</b>	<b>100.00</b>

AREAS ARE GENERATED FROM PROPOSED SURFACE UTILISATION PLAN

## BROAD LAND USES FOR BARDEZ TALUKA

	FINAL RPG-2021 AREA IN HECTARES	FINAL RPG-2021 % OF TALUKA
<b>ECO - 1</b>		
FOREST (Protected/reserved/ national park/wild life)	0.00	0.00
MANGROVE FOREST	474.56	1.90
PRIVATE FOREST	671.51	2.68
WATER BODIES/ nalla/ponds	1646.62	6.58
PADDY FIELD/KHAZAN LANDS	5021.72	20.06
<b>SUB TOTAL</b>	<b>7814.42</b>	<b>31.22</b>
<b>ECO - 2</b>		
ORCHARD	3742.93	14.95
NATURAL COVER	3221.04	12.87
CULTIVABLE	926.36	3.70
SALT PANS	82.29	0.33
FISH FARM / MUD FLATS	0.00	0.00
<b>SUB TOTAL</b>	<b>7972.62</b>	<b>31.85</b>
SETTLEMENT	8118.88	32.44
INSTITUTIONAL	260.49	1.04
INDUSTRY	169.46	0.68
MIZ	36.28	0.14
TRANSPORTATION	659.18	2.63
MISCELLANEOUS	0.00	0.00
<b>GRAND TOTAL</b>	<b>25031</b>	<b>100.00</b>



TALUKA: TISWADI  
PANCHAYAT WISE BROAD LANDUSE TABLE

PANCHAYAT NAMES	V.P. AZOSSIM-MANDUR		V.P. BATIM		V.P. CARAMBOLIM		V.P. CHIMBEL	
Area as per census (Ha)	548		687		1457		446	
	AREA IN HECTARES	% OF TOTAL PANCHAYAT	AREA IN HECTARES	% OF TOTAL PANCHAYAT	AREA IN HECTARES	% OF TOTAL PANCHAYAT	AREA IN HECTARES	% OF TOTAL PANCHAYAT
<b>ECO - 1</b>								
FOREST (Protected/reserved/ national park/wild life)	0.00	0.00	0.00	0.00	0.00	0.00	0.00	0.00
MANGROVE FOREST	0.00	0.00	3.49	0.51	150.31	10.32	0.00	0.00
PRIVATE FOREST	7.03	1.28	0.00	0.00	0.00	0.00	0.00	0.00
WATER BODIES/ nalla/ponds	21.31	3.89	35.31	5.14	0.00	0.00	19.61	4.40
PADDY FIELD/KHAZAN LANDS	91.61	16.72	348.39	50.72	289.44	19.87	8.80	1.97
<b>ECO - 2</b>								
ORCHARD	82.42	15.04	24.24	3.53	182.67	12.54	82.27	18.45
NATURAL COVER	175.30	32.00	87.08	12.68	610.11	41.89	96.00	21.53
CULTIVABLE	0.00	0.00	4.43	0.65	0.51	0.04	0.00	0.00
SALT PANS	0.00	0.00	60.24	8.77	0.00	0.00	0.00	0.00
FISH FARM / MUD FLATS	0.00	0.00	1.00	0.15	0.00	0.00	0.00	0.00
SETTLEMENT	144.91	26.45	110.22	16.05	177.88	12.21	214.26	48.06
INSTITUTIONAL	1.96	0.36	1.43	0.21	3.15	0.22	6.94	1.56
INDUSTRY	0.00	0.00	2.15	0.31	0.00	0.00	3.97	0.89
MIZ	4.67	0.85	0.00	0.00	0.38	0.03	0.00	0.00
TRANSPORTATION	18.68	3.41	8.92	1.30	42.10	2.89	13.99	3.14
MISCELLANEOUS	0.00	0.00	0.00	0.00	0.00	0.00	0.00	0.00
<b>GRAND TOTAL</b>	<b>548</b>	<b>100.00</b>	<b>687</b>	<b>100.00</b>	<b>1457</b>	<b>100.00</b>	<b>446</b>	<b>100.00</b>

AREAS ARE GENERATED FROM PROPOSED SURFACE UTILISATION PLAN

TALUKA: TISWADI  
PANCHAYAT WISE BROAD LANDUSE TABLE

PANCHAYAT NAMES	V.P. CHODAN MADEL		V.P. CORLIM		V.P. CURCA-BAMBOLIM-TALAU LIM		V.P. GOLTIM-NAVELIM	
Area as per census (Ha)	1897		592		1866		1058	
	AREA IN HECTARES	% OF TOTAL PANCHAYAT	AREA IN HECTARES	% OF TOTAL PANCHAYAT	AREA IN HECTARES	% OF TOTAL PANCHAYAT	AREA IN HECTARES	% OF TOTAL PANCHAYAT
<b>ECO - 1</b>								
FOREST (Protected/reserved/national park/wild life)	0.00	0.00	0.00	0.00	0.00	0.00	0.00	0.00
MANGROVE FOREST	319.35	16.84	8.80	1.49	0.00	0.00	217.66	20.58
PRIVATE FOREST	0.00	0.00	0.00	0.00	29.91	1.60	0.00	0.00
WATER BODIES/ nalla/ponds	259.88	13.70	55.26	9.34	95.57	5.12	341.11	32.26
PADDY FIELD/KHAZAN LANDS	609.04	32.11	151.79	25.65	164.11	8.80	338.26	31.99
<b>ECO - 2</b>								
ORCHARD	162.54	8.57	15.76	2.66	349.42	18.73	25.24	2.39
NATURAL COVER	97.92	5.16	8.71	1.47	272.38	14.60	0.00	0.00
CULTIVABLE	0.00	0.00	0.00	0.00	0.00	0.00	0.00	0.00
SALT PANS	0.00	0.00	0.00	0.00	0.00	0.00	0.00	0.00
FISH FARM / MUD FLATS	36.28	1.91	0.00	0.00	0.00	0.00	0.00	0.00
SETTLEMENT	383.71	20.23	234.11	39.56	457.28	24.51	120.75	11.42
INSTITUTIONAL	3.62	0.19	2.00	0.34	457.18	24.50	0.00	0.00
INDUSTRY	0.00	0.00	102.79	17.37	0.00	0.00	0.00	0.00
MIZ	0.00	0.00	0.00	0.00	0.00	0.00	0.00	0.00
TRANSPORTATION	24.44	1.29	12.52	2.12	25.41	1.36	14.50	1.37
MISCELLANEOUS	0.00	0.00	0.00	0.00	14.41	0.77	0.00	0.00
<b>GRAND TOTAL</b>	<b>1897</b>	<b>100.00</b>	<b>592</b>	<b>100.00</b>	<b>1866</b>	<b>100.00</b>	<b>1058</b>	<b>100.00</b>

AREAS ARE GENERATED FROM PROPOSED SURFACE UTILISATION PLAN

TALUKA: TISWADI  
PANCHAYAT WISE BROAD LANDUSE TABLE

PANCHAYAT NAMES	V.P. CUMBHARJUA		V.P. MERCES		V.P. NEURA		V.P. SAO MATIAS	
Area as per census (Ha)	385		1003		833		772	
	AREA IN HECTARES	% OF TOTAL PANCHAYAT	AREA IN HECTARES	% OF TOTAL PANCHAYAT	AREA IN HECTARES	% OF TOTAL PANCHAYAT	AREA IN HECTARES	% OF TOTAL PANCHAYAT
<b>ECO - 1</b>								
FOREST (Protected/reserved/ national park/wild life)	0.00	0.00	0.00	0.00	0.00	0.00	0.00	0.00
MANGROVE FOREST	8.96	2.33	140.34	14.00	103.21	12.39	41.25	5.34
PRIVATE FOREST	0.00	0.00	0.00	0.00	26.07	3.13	0.00	0.00
WATER BODIES/ nalla/ponds	35.42	9.21	52.41	5.23	94.02	11.29	208.04	26.93
PADDY FIELD/KHAZAN LANDS	112.37	29.21	251.79	25.11	418.86	50.29	314.46	40.71
<b>ECO - 2</b>								
ORCHARD	51.62	13.42	131.97	13.16	26.99	3.24	22.30	2.89
NATURAL COVER	40.61	10.55	144.94	14.46	61.35	7.37	5.45	0.71
CULTIVABLE	0.00	0.00	4.35	0.43	0.00	0.00	0.00	0.00
SALT PANS	0.00	0.00	45.47	4.53	0.00	0.00	0.00	0.00
FISH FARM / MUD FLATS	0.00	0.00	0.00	0.00	0.00	0.00	11.74	1.52
SETTLEMENT	125.49	32.62	208.95	20.84	68.91	8.27	138.63	17.95
INSTITUTIONAL	3.74	0.97	3.59	0.36	0.00	0.00	0.82	0.11
INDUSTRY	0.69	0.18	0.81	0.08	0.00	0.00	0.00	0.00
MIZ	0.00	0.00	0.00	0.00	0.00	0.00	0.00	0.00
TRANSPORTATION	5.83	1.52	18.08	1.80	33.50	4.02	29.72	3.85
MISCELLANEOUS	0.00	0.00	0.00	0.00	0.00	0.00	0.00	0.00
<b>GRAND TOTAL</b>	<b>385</b>	<b>100.00</b>	<b>1003</b>	<b>100.00</b>	<b>833</b>	<b>100.00</b>	<b>772</b>	<b>100.00</b>

AREAS ARE GENERATED FROM PROPOSED SURFACE UTILISATION PLAN

TALUKA: TISWADI  
PANCHAYAT WISE BROAD LANDUSE TABLE

PANCHAYAT NAMES	V.P. SIRIDAO-PALE		V.P. SE-OLD-GOA		V.P. St. ANDRE (GOA-VELHA)		V.P. St. CRUZ	
Area as per census (Ha)	588		1042		673		1284	
	AREA IN HECTARES	% OF TOTAL PANCHAYAT	AREA IN HECTARES	% OF TOTAL PANCHAYAT	AREA IN HECTARES	% OF TOTAL PANCHAYAT	AREA IN HECTARES	% OF TOTAL PANCHAYAT
<b>ECO - 1</b>								
FOREST (Protected/reserved/national park/wild life)	0.00	0.00	0.00	0.00	0.00	0.00	0.00	0.00
MANGROVE FOREST	24.87	4.23	9.64	0.92	21.78	3.23	4.08	0.32
PRIVATE FOREST	0.00	0.00	36.65	3.52	0.00	0.00	0.00	0.00
WATER BODIES/ nalla/ponds	349.33	59.36	90.19	8.65	286.80	42.59	359.29	27.97
PADDY FIELD/KHAZAN LANDS	16.83	2.86	67.96	6.52	107.33	15.94	345.78	26.92
<b>ECO - 2</b>								
ORCHARD	85.85	14.59	237.34	22.77	53.17	7.89	42.33	3.30
NATURAL COVER	30.52	5.19	112.91	10.83	14.38	2.14	83.19	6.48
CULTIVABLE	0.00	0.00	0.00	0.00	0.98	0.15	0.22	0.02
SALT PANS	0.00	0.00	0.00	0.00	26.03	3.87	20.27	1.58
FISH FARM / MUD FLATS	0.00	0.00	8.94	0.86	0.00	0.00	0.00	0.00
SETTLEMENT	75.43	12.82	338.51	32.47	127.03	18.86	261.29	20.34
INSTITUTIONAL	0.54	0.09	110.26	10.58	25.79	3.83	141.52	11.02
INDUSTRY	0.00	0.00	10.66	1.02	0.00	0.00	0.00	0.00
MIZ	0.00	0.00	0.00	0.00	0.00	0.00	0.00	0.00
TRANSPORTATION	5.09	0.87	19.35	1.86	10.17	1.51	26.35	2.05
MISCELLANEOUS	0.00	0.00	0.00	0.00	0.00	0.00	0.00	0.00
<b>GRAND TOTAL</b>	<b>588</b>	<b>100.00</b>	<b>1042</b>	<b>100.00</b>	<b>673</b>	<b>100.00</b>	<b>1284</b>	<b>100.00</b>

AREAS ARE GENERATED FROM PROPOSED SURFACE UTILISATION PLAN

TALUKA: TISWADI  
PANCHAYAT WISE BROAD LANDUSE TABLE

PANCHAYAT NAMES	V.P. St. ESTEVAM		V.P. St. LAWRENCE (AGASAIM)		PANAJI ODP		TALEGAO ODP	
Area as per census (Ha)	1091		1089		2101		1463	
	AREA IN HECTARES	% OF TOTAL PANCHAYAT	AREA IN HECTARES	% OF TOTAL PANCHAYAT	AREA IN HECTARES	% OF TOTAL ODP AREA	AREA IN HECTARES	% OF TOTAL ODP AREA
<b>ECO - 1</b>								
FOREST (Protected/reserved/ national park/wild life)	0.00	0.00	0.00	0.00	0.00	0.00	0.00	0.00
MANGROVE FOREST	57.09	5.23	36.15	3.32	0.00	0.00	0.00	0.00
PRIVATE FOREST	0.00	0.00	0.00	0.00	0.00	0.00	0.00	0.00
WATER BODIES/ nalla/ponds	572.15	52.44	507.70	46.61	1400.11	66.64	914.01	62.49
PADDY FIELD/KHAZAN LANDS	311.50	28.55	213.57	19.61	21.07	1.00	152.79	10.45
<b>ECO - 2</b>								
ORCHARD	29.93	2.74	76.96	7.07	132.57	6.31	-43.91	-3.00
NATURAL COVER	0.22	0.02	0.00	0.00	0.00	0.00	0.00	0.00
CULTIVABLE	0.00	0.00	1.28	0.12	0.00	0.00	0.00	0.00
SALT PANS	0.00	0.00	0.00	0.00	0.00	0.00	0.00	0.00
FISH FARM / MUD FLATS	0.00	0.00	0.00	0.00	0.00	0.00	0.00	0.00
SETTLEMENT	107.83	9.88	224.15	20.58	389.79	18.55	360.24	24.63
INSTITUTIONAL	0.59	0.05	1.86	0.17	77.89	3.71	0.00	0.00
INDUSTRY	0.00	0.00	0.00	0.00	0.00	0.00	0.00	0.00
MIZ	0.00	0.00	0.00	0.00	0.00	0.00	0.00	0.00
TRANSPORTATION	11.65	1.07	27.49	2.52	79.44	3.78	79.54	5.44
MISCELLANEOUS	0.00	0.00	0.00	0.00	0.00	0.00	0.00	0.00
<b>GRAND TOTAL</b>	<b>1091</b>	<b>100.00</b>	<b>1089</b>	<b>100.00</b>	<b>2101</b>	<b>100.00</b>	<b>1463</b>	<b>100.00</b>

AREAS ARE GENERATED FROM PROPOSED SURFACE UTILISATION PLAN

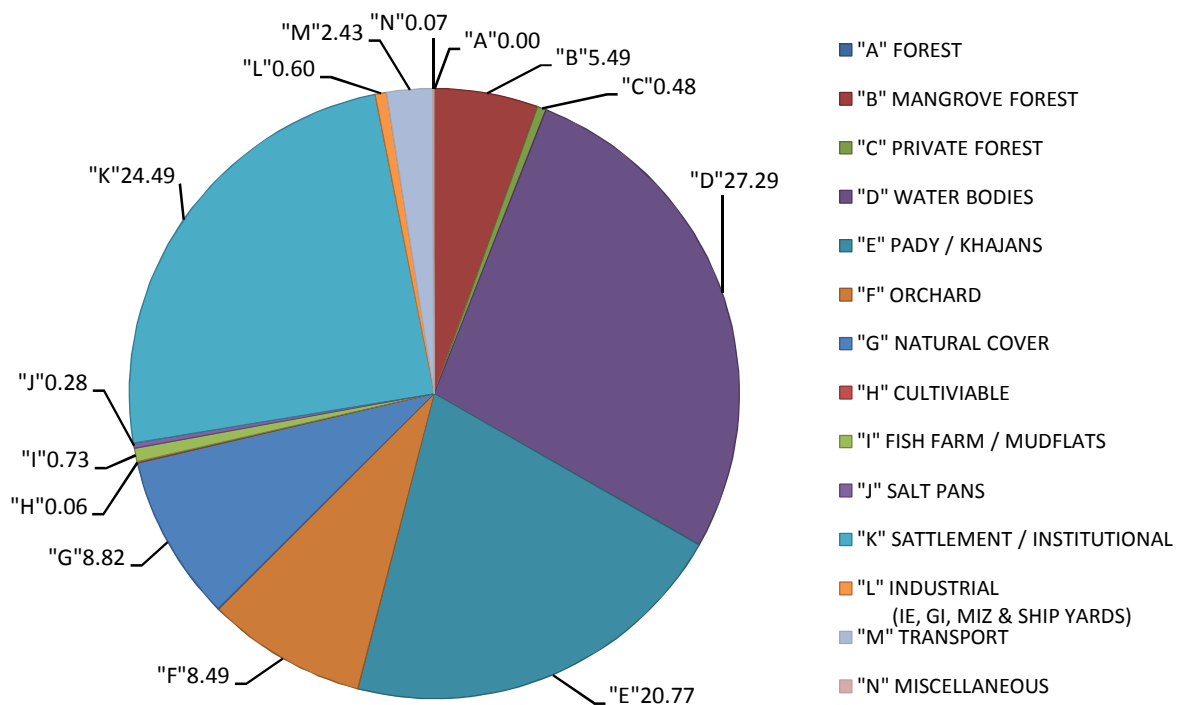
TALUKA: TISWADI  
PANCHAYAT WISE BROAD LANDUSE TABLE

PANCHAYAT NAMES	TALUKA TOTAL	
Area as per census (Ha)	20874	
	AREA IN HECTARES	% OF TOTAL
<b>ECO - 1</b>		
FOREST (Protected/reserved/ national park/wild life)	0.00	0.00
MANGROVE FOREST	1146.98	5.49
PRIVATE FOREST	99.65	0.48
WATER BODIES/ nalla/ponds	5697.53	27.29
PADDY FIELD/KHAZAN LANDS	4335.74	20.77
<b>ECO - 2</b>		
ORCHARD	1771.67	8.49
NATURAL COVER	1841.07	8.82
CULTIVABLE	11.78	0.06
SALT PANS	152.02	0.73
FISH FARM / MUD FLATS	57.96	0.28
SETTLEMENT	4269.36	20.45
INSTITUTIONAL	842.87	4.04
INDUSTRY	121.08	0.58
MIZ	5.05	0.02
TRANSPORTATION	506.76	2.43
MISCELLANEOUS	14.41	0.07
<b>GRAND TOTAL</b>	<b>20874</b>	<b>100.00</b>

AREAS ARE GENERATED FROM PROPOSED SURFACE UTILISATION PLAN

## BROAD LAND USES FOR TISWADI TALUKA

	FINAL RPG-2021	FINAL RPG-2021
	AREA IN HECTARES	% OF TALUKA
<b>ECO - 1</b>		
FOREST (Protected/reserved/ national park/wild life)	0.00	0.00
MANGROVE FOREST	1146.98	5.49
PRIVATE FOREST	99.65	0.48
WATER BODIES/ nalla/ponds	5697.53	27.29
PADDY FIELD/KHAZAN LANDS	4335.74	20.77
<b>SUB TOTAL</b>	<b>11279.89</b>	<b>54.04</b>
<b>ECO - 2</b>		
ORCHARD	1771.67	8.49
NATURAL COVER	1841.07	8.82
CULTIVABLE	11.78	0.06
SALT PANS	152.02	0.73
FISH FARM / MUD FLATS	57.96	0.28
<b>SUB TOTAL</b>	<b>3834.50</b>	<b>18.37</b>
SETTLEMENT	4269.36	20.45
INSTITUTIONAL	842.87	4.04
INDUSTRY	121.08	0.58
MIZ	5.05	0.02
TRANSPORTATION	506.76	2.43
MISCELLANEOUS	14.41	0.07
<b>GRAND TOTAL</b>	<b>20874</b>	<b>100.00</b>



TALUKA: MORMUGAO  
PANCHAYAT WISE BROAD LANDUSE TABLE

PANCHAYAT NAMES	V.P. CANSAULIM- AROSSIM-CUELIM		V.P. CORTALIM- QUELOSSIM		V.P. VELSAO-PALE		VASCO ODP	
Area as per census (Ha)	969		2258		616		6297	
	AREA IN HECTARES	% OF TOTAL PANCHAYAT	AREA IN HECTARES	% OF TOTAL PANCHAYAT	AREA IN HECTARES	% OF TOTAL PANCHAYAT	AREA IN HECTARES	% OF TOTAL ODP AREA
<b>ECO - 1</b>								
FOREST (Protected/reserved/ national park/wild life)	0.00	0.00	0.00	0.00	0.00	0.00	0.00	0.00
MANGROVE FOREST	0.00	0.00	149.06	6.60	0.00	0.00	0.00	0.00
PRIVATE FOREST	0.00	0.00	0.00	0.00	0.00	0.00	0.00	0.00
WATER BODIES/ nalla/ponds	13.02	1.34	401.57	17.79	8.62	1.40	1844.36	29.29
PADDY FIELD/KHAZAN LANDS	299.96	30.96	318.78	14.12	68.07	11.05	198.86	3.16
<b>ECO - 2</b>								
ORCHARD	152.35	15.72	706.96	31.31	111.22	18.06	1193.53	18.95
NATURAL COVER	0.00	0.00	15.78	0.70	30.55	4.96	0.00	0.00
CULTIVABLE	0.00	0.00	0.00	0.00	0.00	0.00	0.00	0.00
SALT PANS	0.00	0.00	0.00	0.00	0.00	0.00	0.00	0.00
FISH FARM / MUD FLATS	0.00	0.00	11.72	0.52	0.00	0.00	0.00	0.00
SETTLEMENT	427.94	44.16	462.33	20.48	357.00	57.96	1604.20	25.47
INSTITUTIONAL	3.78	0.39	20.25	0.90	1.13	0.18	208.94	3.32
INDUSTRY	0.00	0.00	114.31	5.06	0.00	0.00	257.12	4.08
MIZ	0.00	0.00	0.00	0.00	0.00	0.00	0.00	0.00
TRANSPORTATION	68.01	7.02	56.90	2.52	37.29	6.05	990.24	15.72
MISCELLANEOUS	3.91	0.40	0.00	0.00	2.03	0.33	0.00	0.00
<b>GRAND TOTAL</b>	<b>969</b>	<b>100.00</b>	<b>2258</b>	<b>100.00</b>	<b>616</b>	<b>100.00</b>	<b>6297</b>	<b>100.00</b>

AREAS ARE GENERATED FROM PROPOSED SURFACE UTILISATION PLAN

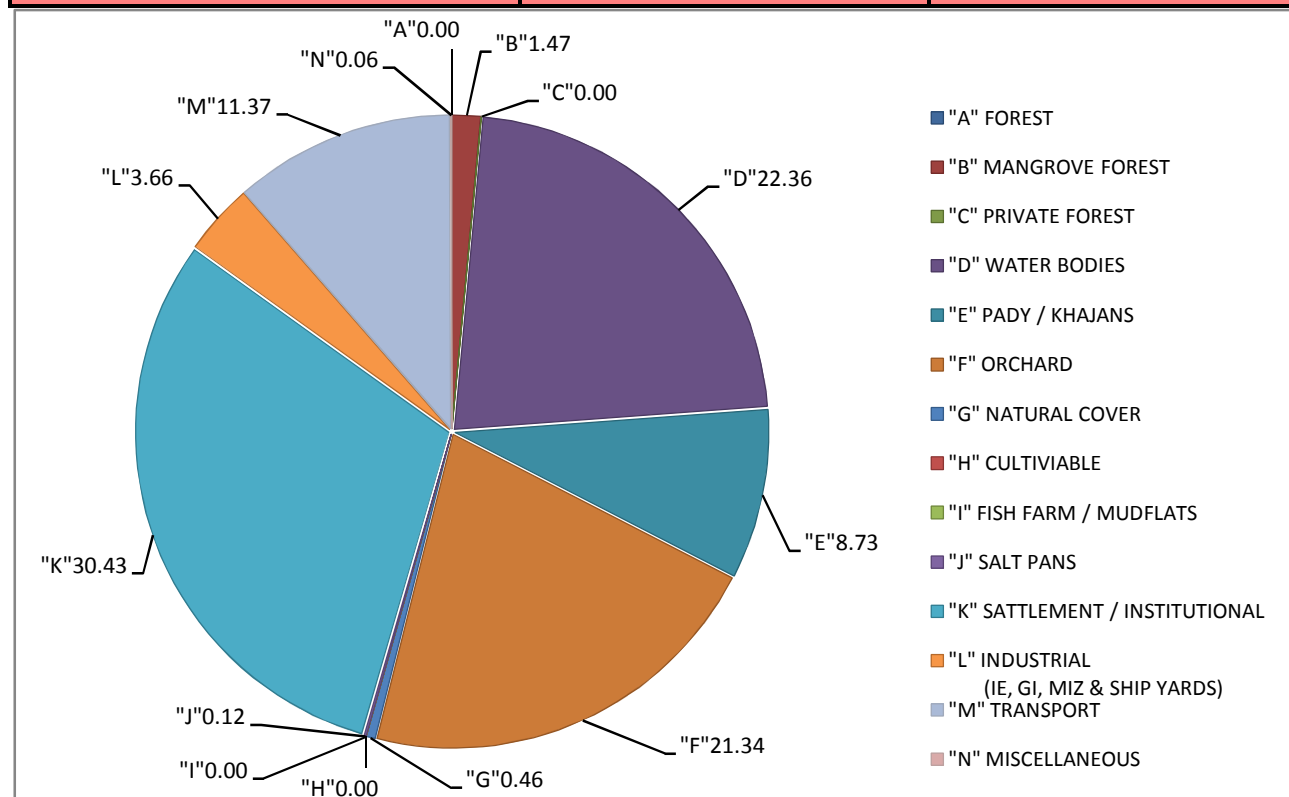
TALUKA: MORMUGAO  
PANCHAYAT WISE BROAD LANDUSE TABLE

PANCHAYAT NAMES	TALUKA TOTAL	
Area as per census (Ha)	10140	
	AREA IN HECTARES	% OF TOTAL
<b>ECO - 1</b>		
FOREST (Protected/reserved/ national park/wild life)	0.00	0.00
MANGROVE FOREST	149.06	1.47
PRIVATE FOREST	0.00	0.00
WATER BODIES/ nalla/ponds	2267.56	22.36
PADDY FIELD/KHAZAN LANDS	885.67	8.73
<b>ECO - 2</b>		
ORCHARD	2164.06	21.34
NATURAL COVER	46.33	0.46
CULTIVABLE	0.00	0.00
SALT PANS	0.00	0.00
FISH FARM / MUD FLATS	11.72	0.12
SETTLEMENT	2851.46	28.12
INSTITUTIONAL	234.10	2.31
INDUSTRY	371.43	3.66
MIZ	0.00	0.00
TRANSPORTATION	1152.45	11.37
MISCELLANEOUS	5.95	0.06
<b>GRAND TOTAL</b>	<b>10140</b>	<b>100.00</b>

AREAS ARE GENERATED FROM PROPOSED SURFACE UTILISATION PLAN

## BROAD LAND USES FOR MORMUGAO TALUKA

	FINAL RPG-2021 AREA IN HECTARES	FINAL RPG-2021 % OF TALUKA
<b>ECO - 1</b>		
FOREST (Protected/reserved/ national park/wild life)	0.00	0.00
MANGROVE FOREST	149.06	1.47
PRIVATE FOREST	0.00	0.00
WATER BODIES/ nalla/ponds	2267.56	22.36
PADDY FIELD/KHAZAN LANDS	885.67	8.73
<b>SUB TOTAL</b>	<b>3302.29</b>	<b>32.57</b>
<b>ECO - 2</b>		
ORCHARD	2164.06	21.34
NATURAL COVER	46.33	0.46
CULTIVABLE	0.00	0.00
SALT PANS	0.00	0.00
FISH FARM / MUD FLATS	11.72	0.12
<b>SUB TOTAL</b>	<b>2222.11</b>	<b>21.91</b>
SETTLEMENT	2851.46	28.12
INSTITUTIONAL	234.10	2.31
INDUSTRY	371.43	3.66
MIZ	0.00	0.00
TRANSPORTATION	1152.45	11.37
MISCELLANEOUS	5.95	0.06
<b>GRAND TOTAL</b>	<b>10140</b>	<b>100.00</b>



TALUKA: SALCET  
PANCHAYAT WISE BROAD LANDUSE TABLE

PANCHAYAT NAMES	V.P. AMBELIM		V.P. AQUEM-BAIXO		V.P. ASSOLNA		V.P. BETALBATIM	
Area as per census (Ha)	391		176		362		483	
	AREA IN HECTARES	% OF TOTAL PANCHAYAT	AREA IN HECTARES	% OF TOTAL PANCHAYAT	AREA IN HECTARES	% OF TOTAL PANCHAYAT	AREA IN HECTARES	% OF TOTAL PANCHAYAT
<b>ECO - 1</b>								
FOREST (Protected/reserved/ national park/wild life)	0.00	0.00	0.00	0.00	0.00	0.00	0.00	0.00
MANGROVE FOREST	0.00	0.00	0.00	0.00	3.99	1.10	0.00	0.00
PRIVATE FOREST	0.00	0.00	0.00	0.00	0.00	0.00	0.00	0.00
WATER BODIES/ nalla/ponds	33.67	8.60	2.06	1.17	39.71	10.97	4.50	0.93
PADDY FIELD/KHAZAN LANDS	152.02	38.83	21.37	12.17	160.58	44.38	157.58	32.65
<b>ECO - 2</b>								
ORCHARD	45.45	11.61	48.37	27.54	35.13	9.71	36.04	7.47
NATURAL COVER	35.11	8.97	1.61	0.91	0.00	0.00	0.00	0.00
CULTIVABLE	1.29	0.33	0.00	0.00	1.37	0.38	1.79	0.37
SALT PANS	0.00	0.00	0.00	0.00	0.00	0.00	0.00	0.00
FISH FARM / MUD FLATS	0.00	0.00	0.00	0.00	0.00	0.00	0.00	0.00
SETTLEMENT	117.30	29.96	96.48	54.94	113.89	31.48	268.49	55.63
INSTITUTIONAL	0.03	0.01	0.00	0.00	0.70	0.19	1.55	0.32
INDUSTRY	0.00	0.00	0.00	0.00	0.00	0.00	0.00	0.00
MIZ	0.00	0.00	0.00	0.00	0.00	0.00	0.00	0.00
TRANSPORTATION	6.60	1.69	5.74	3.27	6.45	1.78	12.67	2.63
MISCELLANEOUS	0.00	0.00	0.00	0.00	0.00	0.00	0.00	0.00
<b>GRAND TOTAL</b>	<b>391</b>	<b>100.00</b>	<b>176</b>	<b>100.00</b>	<b>362</b>	<b>100.00</b>	<b>483</b>	<b>100.00</b>

AREAS ARE GENERATED FROM PROPOSED SURFACE UTILISATION PLAN

TALUKA: SALCET  
PANCHAYAT WISE BROAD LANDUSE TABLE

PANCHAYAT NAMES	V.P. CAMURLIM		V.P. CANA-BENAILIM		V.P. CARMONA		V.P. CAVELOSSIM	
Area as per census (Ha)	357		1079		631		776	
	AREA IN HECTARES	% OF TOTAL PANCHAYAT	AREA IN HECTARES	% OF TOTAL PANCHAYAT	AREA IN HECTARES	% OF TOTAL PANCHAYAT	AREA IN HECTARES	% OF TOTAL PANCHAYAT
<b>ECO - 1</b>								
FOREST (Protected/reserved/ national park/wild life)	0.00	0.00	0.00	0.00	0.00	0.00	0.00	0.00
MANGROVE FOREST	0.00	0.00	0.00	0.00	32.16	5.10	14.92	1.92
PRIVATE FOREST	6.47	1.81	0.00	0.00	0.00	0.00	0.00	0.00
WATER BODIES/ nalla/ponds	25.15	7.05	28.33	2.63	74.70	11.84	134.35	17.32
PADDY FIELD/KHAZAN LANDS	93.46	26.19	369.02	34.19	265.25	42.05	143.71	18.52
<b>ECO - 2</b>								
ORCHARD	176.45	49.45	18.89	1.75	12.25	1.94	278.49	35.89
NATURAL COVER	45.66	12.80	1.09	0.10	0.00	0.00	0.00	0.00
CULTIVABLE	0.00	0.00	5.49	0.51	2.19	0.35	0.00	0.00
SALT PANS	0.00	0.00	0.00	0.00	0.00	0.00	2.75	0.35
FISH FARM / MUD FLATS	0.00	0.00	0.86	0.08	1.08	0.17	0.00	0.00
SETTLEMENT	0.00	0.00	630.51	58.42	233.57	37.03	200.29	25.81
INSTITUTIONAL	0.00	0.00	1.63	0.15	3.32	0.53	1.36	0.17
INDUSTRY	0.00	0.00	0.00	0.00	0.00	0.00	0.00	0.00
MIZ	0.00	0.00	0.00	0.00	0.00	0.00	0.00	0.00
TRANSPORTATION	9.66	2.71	23.44	2.17	6.22	0.99	0.00	0.00
MISCELLANEOUS	0.00	0.00	0.00	0.00	0.00	0.00	0.00	0.00
<b>GRAND TOTAL</b>	<b>357</b>	<b>100.00</b>	<b>1079</b>	<b>100.00</b>	<b>631</b>	<b>100.00</b>	<b>776</b>	<b>100.00</b>

AREAS ARE GENERATED FROM PROPOSED SURFACE UTILISATION PLAN

PANCHAYAT NAMES	V.P. CHANDOR-CAVORIM		V.P. CHINCHINIM-DEUSSUA		V.P. COLVA		CUNCOLIM MCL	
Area as per census (Ha)	760		1289		574		2965	
	AREA IN HECTARES	% OF TOTAL PANCHAYAT	AREA IN HECTARES	% OF TOTAL PANCHAYAT	AREA IN HECTARES	% OF TOTAL PANCHAYAT	AREA IN HECTARES	% OF TOTAL PANCHAYAT
<b>ECO - 1</b>								
FOREST (Protected/reserved/national park/wild life)	0.00	0.00	0.00	0.00	0.00	0.00	0.00	0.00
MANGROVE FOREST	0.00	0.00	19.56	1.52	0.00	0.00	0.00	0.00
PRIVATE FOREST	0.00	0.00	0.00	0.00	0.00	0.00	0.00	0.00
WATER BODIES/ nalla/ponds	68.47	9.00	132.63	10.29	5.88	1.02	45.35	1.53
PADDY FIELD/KHAZAN LANDS	214.27	28.18	650.26	50.44	136.22	23.75	845.84	28.52
<b>ECO - 2</b>								
ORCHARD	199.17	26.19	0.25	0.02	52.12	9.09	368.01	12.41
NATURAL COVER	43.40	5.71	42.91	3.33	0.00	0.00	654.81	22.08
CULTIVABLE	43.12	5.67	27.58	2.14	6.58	1.15	0.00	0.00
SALT PANS	0.00	0.00	18.11	1.40	0.00	0.00	0.00	0.00
FISH FARM / MUD FLATS	0.00	0.00	0.00	0.00	0.00	0.00	0.00	0.00
SETTLEMENT	172.11	22.63	324.27	25.15	361.25	62.97	718.07	24.22
INSTITUTIONAL	0.59	0.08	2.27	0.18	0.94	0.16	114.18	3.85
INDUSTRY	0.00	0.00	0.00	0.00	0.00	0.00	141.94	4.79
MIZ	0.00	0.00	0.00	0.00	0.00	0.00	0.00	0.00
TRANSPORTATION	19.28	2.54	71.31	5.53	10.66	1.86	77.06	2.60
MISCELLANEOUS	0.00	0.00	0.00	0.00	0.00	0.00	0.00	0.00
<b>GRAND TOTAL</b>	<b>760</b>	<b>100.00</b>	<b>1289</b>	<b>100.00</b>	<b>574</b>	<b>100.00</b>	<b>2965</b>	<b>100.00</b>

TALUKA: SALCET  
PANCHAYAT WISE BROAD LANDUSE TABLE

PANCHAYAT NAMES	V.P. CURTORIM		V.P. DAVORLIM-DICARPALE		V.P. DRAMAPUR-SIRLIM		V.P. GUIRDOLIM	
Area as per census (Ha)	1700		520		731		665	
	AREA IN HECTARES	% OF TOTAL PANCHAYAT	AREA IN HECTARES	% OF TOTAL PANCHAYAT	AREA IN HECTARES	% OF TOTAL PANCHAYAT	AREA IN HECTARES	% OF TOTAL PANCHAYAT
<b>ECO - 1</b>								
FOREST (Protected/reserved/national park/wild life)	0.00	0.00	0.00	0.00	0.00	0.00	0.00	0.00
MANGROVE FOREST	20.63	1.21	0.00	0.00	6.87	0.94	0.00	0.00
PRIVATE FOREST	2.42	0.14	0.00	0.00	0.00	0.00	0.00	0.00
WATER BODIES/ nalla/ponds	131.09	7.71	0.00	0.00	26.59	3.64	0.00	0.00
PADDY FIELD/KHAZAN LANDS	504.15	29.65	150.58	28.98	304.03	41.62	224.26	33.71
<b>ECO - 2</b>								
ORCHARD	13.73	0.81	19.85	3.82	99.05	13.56	134.88	20.28
NATURAL COVER	350.73	20.63	53.70	10.34	0.00	0.00	31.06	4.67
CULTIVABLE	1.31	0.08	2.10	0.40	20.42	2.80	6.00	0.90
SALT PANS	0.00	0.00	0.00	0.00	4.99	0.68	0.00	0.00
FISH FARM / MUD FLATS	9.55	0.56	0.00	0.00	0.00	0.00	0.00	0.00
SETTLEMENT	622.80	36.63	249.54	48.03	253.91	34.76	232.25	34.91
INSTITUTIONAL	1.78	0.10	3.51	0.68	0.00	0.00	3.72	0.56
INDUSTRY	-1.78	-0.10	0.50	0.10	0.00	0.00	0.00	0.00
MIZ	3.23	0.19	0.00	0.00	0.00	0.00	0.00	0.00
TRANSPORTATION	40.68	2.39	39.75	7.65	14.66	2.01	33.04	4.97
MISCELLANEOUS	0.00	0.00	0.00	0.00	0.00	0.00	0.00	0.00
<b>GRAND TOTAL</b>	<b>1700</b>	<b>100.00</b>	<b>520</b>	<b>100.00</b>	<b>731</b>	<b>100.00</b>	<b>665</b>	<b>100.00</b>

AREAS ARE GENERATED FROM PROPOSED SURFACE UTILISATION PLAN

TALUKA: SALCET  
PANCHAYAT WISE BROAD LANDUSE TABLE

PANCHAYAT NAMES	V.P. LOUTULIM		V.P. MACASANA		V.P. MAJORDA-UTORDA-CALATA		V.P. NAGOA	
Area as per census (Ha)	1794		469		941		520	
	AREA IN HECTARES	% OF TOTAL PANCHAYAT	AREA IN HECTARES	% OF TOTAL PANCHAYAT	AREA IN HECTARES	% OF TOTAL PANCHAYAT	AREA IN HECTARES	% OF TOTAL PANCHAYAT
<b>ECO - 1</b>								
FOREST (Protected/reserved/ national park/wild life)	0.00	0.00	0.00	0.00	0.00	0.00	0.00	0.00
MANGROVE FOREST	29.68	1.65	25.31	5.39	0.00	0.00	0.00	0.00
PRIVATE FOREST	12.26	0.68	0.00	0.00	0.00	0.00	0.00	0.00
WATER BODIES/ nalla/ponds	190.91	10.64	27.11	5.78	12.24	1.30	6.71	1.29
PADDY FIELD/KHAZAN LANDS	319.46	17.80	189.44	40.37	391.13	41.56	146.51	28.19
<b>ECO - 2</b>								
ORCHARD	134.50	7.50	16.91	3.60	109.80	11.67	8.28	1.59
NATURAL COVER	308.45	17.19	37.89	8.07	0.00	0.00	36.08	6.94
CULTIVABLE	0.00	0.00	7.26	1.55	5.73	0.61	8.27	1.59
SALT PANS	0.00	0.00	0.00	0.00	0.00	0.00	0.00	0.00
FISH FARM / MUD FLATS	0.00	0.00	0.00	0.00	0.00	0.00	0.00	0.00
SETTLEMENT	428.92	23.90	137.25	29.25	411.03	43.68	110.45	21.25
INSTITUTIONAL	0.00	0.00	21.31	4.54	1.71	0.18	0.90	0.17
INDUSTRY	303.81	16.93	0.00	0.00	0.00	0.00	162.61	31.29
MIZ	0.00	0.00	0.00	0.00	0.00	0.00	0.00	0.00
TRANSPORTATION	66.35	3.70	6.83	1.46	9.43	1.00	39.94	7.68
MISCELLANEOUS	0.00	0.00	0.00	0.00	0.00	0.00	0.00	0.00
<b>GRAND TOTAL</b>	<b>1794</b>	<b>100.00</b>	<b>469</b>	<b>100.00</b>	<b>941</b>	<b>100.00</b>	<b>520</b>	<b>100.00</b>

AREAS ARE GENERATED FROM PROPOSED SURFACE UTILISATION PLAN

TALUKA: SALCET  
PANCHAYAT WISE BROAD LANDUSE TABLE

PANCHAYAT NAMES	V.P. NAVELIM		V.P. NUVEM		V.P. ORLIM		V.P. PARODA	
Area as per census (Ha)	530		1107		270		1206	
	AREA IN HECTARES	% OF TOTAL PANCHAYAT	AREA IN HECTARES	% OF TOTAL PANCHAYAT	AREA IN HECTARES	% OF TOTAL PANCHAYAT	AREA IN HECTARES	% OF TOTAL PANCHAYAT
<b>ECO - 1</b>								
FOREST (Protected/reserved/ national park/wild life)	0.00	0.00	0.00	0.00	0.00	0.00	0.00	0.00
MANGROVE FOREST	8.67	1.64	0.00	0.00	7.50	2.77	0.00	0.00
PRIVATE FOREST	0.00	0.00	0.00	0.00	0.00	0.00	0.00	0.00
WATER BODIES/ nalla/ponds	21.92	4.14	21.94	1.98	13.49	4.99	22.63	1.88
PADDY FIELD/KHAZAN LANDS	189.99	35.86	233.51	21.09	95.15	35.19	317.26	26.31
<b>ECO - 2</b>								
ORCHARD	15.21	2.87	218.34	19.72	1.91	0.71	205.44	17.04
NATURAL COVER	0.00	0.00	169.88	15.34	0.00	0.00	507.43	42.08
CULTIVABLE	12.93	2.44	6.45	0.58	1.87	0.69	14.13	1.17
SALT PANS	3.63	0.68	0.00	0.00	2.26	0.84	0.00	0.00
FISH FARM / MUD FLATS	0.00	0.00	0.00	0.00	0.00	0.00	0.00	0.00
SETTLEMENT	265.56	50.12	428.27	38.68	144.02	53.26	114.09	9.46
INSTITUTIONAL	1.30	0.24	2.78	0.25	0.00	0.00	0.29	0.02
INDUSTRY	0.00	0.00	3.55	0.32	0.00	0.00	4.92	0.41
MIZ	0.00	0.00	0.00	0.00	0.00	0.00	5.05	0.42
TRANSPORTATION	10.61	2.00	22.48	2.03	4.19	1.55	14.57	1.21
MISCELLANEOUS	0.00	0.00	0.00	0.00	0.00	0.00	0.00	0.00
<b>GRAND TOTAL</b>	<b>530</b>	<b>100.00</b>	<b>1107</b>	<b>100.00</b>	<b>270</b>	<b>100.00</b>	<b>1206</b>	<b>100.00</b>

AREAS ARE GENERATED FROM PROPOSED SURFACE UTILISATION PLAN

TALUKA: SALCET  
PANCHAYAT WISE BROAD LANDUSE TABLE

PANCHAYAT NAMES	V.P. RACHOL		V.P. RAIA		V.P. SAO-JOSE-DE-AREAL		V.P. SARZORA	
Area as per census (Ha)	219		1519		1250		660	
	AREA IN HECTARES	% OF TOTAL PANCHAYAT	AREA IN HECTARES	% OF TOTAL PANCHAYAT	AREA IN HECTARES	% OF TOTAL PANCHAYAT	AREA IN HECTARES	% OF TOTAL PANCHAYAT
<b>ECO - 1</b>								
FOREST (Protected/reserved/ national park/wild life)	0.00	0.00	0.00	0.00	0.00	0.00	0.00	0.00
MANGROVE FOREST	5.08	2.32	5.01	0.33	0.00	0.00	0.00	0.00
PRIVATE FOREST	0.00	0.00	7.09	0.47	0.00	0.00	0.00	0.00
WATER BODIES/ nalla/ponds	38.78	17.70	40.79	2.68	0.00	0.00	14.52	2.20
PADDY FIELD/KHAZAN LANDS	126.32	57.66	347.06	22.84	478.68	38.28	267.51	40.53
<b>ECO - 2</b>								
ORCHARD	2.33	1.06	247.28	16.27	92.16	7.37	9.02	1.37
NATURAL COVER	0.00	0.00	284.94	18.75	33.07	2.64	172.76	26.18
CULTIVABLE	0.00	0.00	0.00	0.00	61.54	4.92	52.65	7.98
SALT PANS	0.00	0.00	0.00	0.00	0.00	0.00	0.00	0.00
FISH FARM / MUD FLATS	0.00	0.00	0.00	0.00	0.00	0.00	0.00	0.00
SETTLEMENT	44.21	20.18	576.92	37.97	383.33	30.65	117.51	17.81
INSTITUTIONAL	0.00	0.00	2.47	0.16	4.13	0.33	1.12	0.17
INDUSTRY	0.00	0.00	7.88	0.52	86.31	6.90	0.00	0.00
MIZ	0.00	0.00	0.00	0.00	0.00	0.00	0.00	0.00
TRANSPORTATION	2.36	1.08	0.00	0.00	111.26	8.90	24.89	3.77
MISCELLANEOUS	0.00	0.00	0.00	0.00	0.00	0.00	0.00	0.00
<b>GRAND TOTAL</b>	<b>219</b>	<b>100.00</b>	<b>1519</b>	<b>100.00</b>	<b>1250</b>	<b>100.00</b>	<b>660</b>	<b>100.00</b>

AREAS ARE GENERATED FROM PROPOSED SURFACE UTILISATION PLAN

TALUKA: SALCET  
PANCHAYAT WISE BROAD LANDUSE TABLE

PANCHAYAT NAMES	V.P. SERAULIM		V.P. TELAULIM		V.P. VARCA		V.P. VELIM	
Area as per census (Ha)	396		486		787		873	
	AREA IN HECTARES	% OF TOTAL PANCHAYAT	AREA IN HECTARES	% OF TOTAL PANCHAYAT	AREA IN HECTARES	% OF TOTAL PANCHAYAT	AREA IN HECTARES	% OF TOTAL PANCHAYAT
<b>ECO - 1</b>								
FOREST (Protected/reserved/ national park/wild life)	0.00	0.00	0.00	0.00	0.00	0.00	0.00	0.00
MANGROVE FOREST	0.00	0.00	11.75	2.42	0.00	0.00	0.00	0.00
PRIVATE FOREST	0.00	0.00	0.00	0.00	0.00	0.00	0.00	0.00
WATER BODIES/ nalla/ponds	4.70	1.19	28.73	5.91	18.97	2.41	87.88	10.07
PADDY FIELD/KHAZAN LANDS	220.36	55.63	250.00	51.43	275.07	34.93	261.01	29.91
<b>ECO - 2</b>								
ORCHARD	8.08	2.04	11.22	2.31	90.62	11.51	127.22	14.58
NATURAL COVER	0.00	0.00	0.00	0.00	0.00	0.00	162.67	18.64
CULTIVABLE	1.67	0.42	5.83	1.20	1.56	0.20	9.19	1.05
SALT PANS	0.00	0.00	27.03	5.56	0.00	0.00	0.00	0.00
FISH FARM / MUD FLATS	0.00	0.00	0.00	0.00	0.00	0.00	0.00	0.00
SETTLEMENT	149.25	37.68	145.28	29.89	389.34	49.44	211.25	24.21
INSTITUTIONAL	1.08	0.27	0.00	0.00	2.09	0.27	2.56	0.29
INDUSTRY	0.00	0.00	0.00	0.00	0.00	0.00	0.00	0.00
MIZ	0.00	0.00	0.00	0.00	0.00	0.00	0.00	0.00
TRANSPORTATION	11.02	2.78	6.25	1.29	9.85	1.25	10.79	1.24
MISCELLANEOUS	0.00	0.00	0.00	0.00	0.00	0.00	0.00	0.00
<b>GRAND TOTAL</b>	<b>396</b>	<b>100.00</b>	<b>486</b>	<b>100.00</b>	<b>787</b>	<b>100.00</b>	<b>873</b>	<b>100.00</b>

AREAS ARE GENERATED FROM PROPOSED SURFACE UTILISATION PLAN

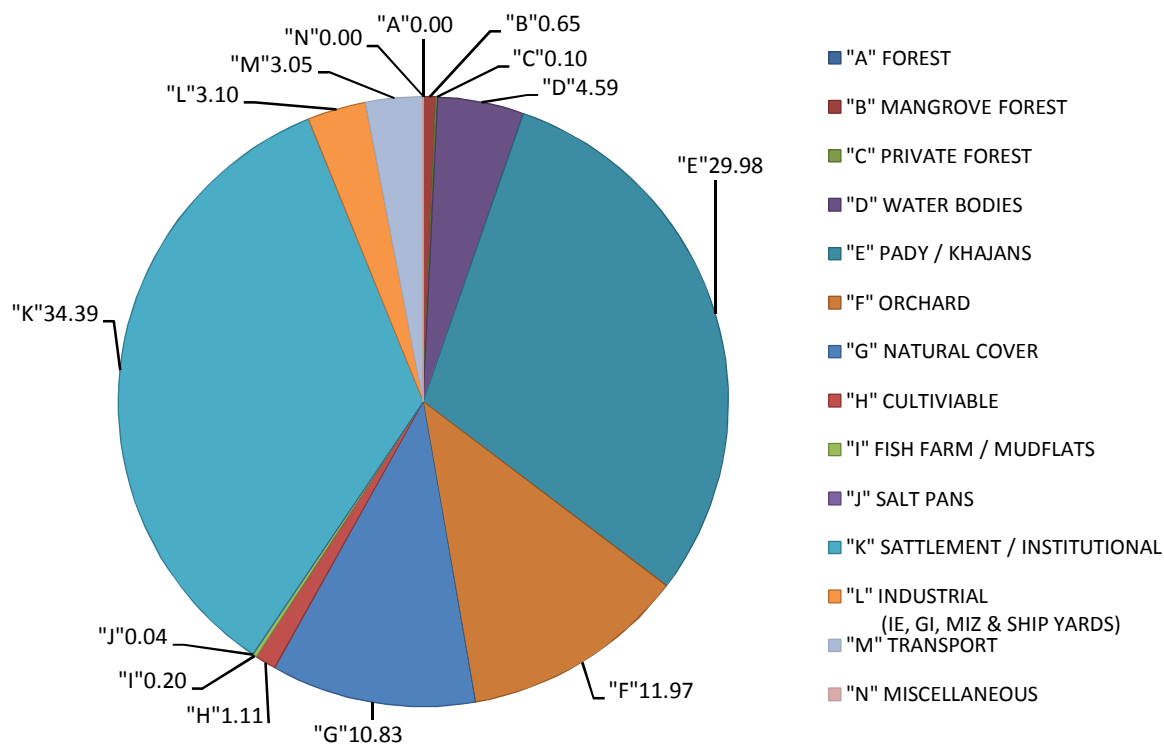
TALUKA: SALCET  
PANCHAYAT WISE BROAD LANDUSE TABLE

PANCHAYAT NAMES	V.P. VERNA		MARGAO MCL		TOTAL TALUKA	
Area as per census (Ha)	1506		1594		29588	
	AREA IN HECTARES	% OF TOTAL PANCHAYAT	AREA IN HECTARES	% OF TOTAL MCL	AREA IN HECTARES	% OF TOTAL
<b>ECO - 1</b>						
FOREST (Protected/reserved/ national park/wild life)	0.00	0.00	0.00	0.00	0.00	0.00
MANGROVE FOREST	0.00	0.00	0.00	0.00	191.13	0.65
PRIVATE FOREST	0.00	0.00	0.00	0.00	28.25	0.10
WATER BODIES/ nalla/ponds	41.79	2.77	12.39	0.78	1357.96	4.59
PADDY FIELD/KHAZAN LANDS	263.90	17.52	106.24	6.66	8871.24	29.98
<b>ECO - 2</b>						
ORCHARD	380.60	25.27	323.78	20.31	3540.83	11.97
NATURAL COVER	231.16	15.35	0.00	0.00	3204.41	10.83
CULTIVABLE	21.04	1.40	0.00	0.00	329.34	1.11
SALT PANS	0.00	0.00	0.00	0.00	58.77	0.20
FISH FARM / MUD FLATS	0.00	0.00	0.00	0.00	11.49	0.04
SETTLEMENT	319.62	21.22	925.91	58.07	9896.96	33.45
INSTITUTIONAL	6.29	0.42	95.82	6.01	279.40	0.94
INDUSTRY	191.32	12.70	6.75	0.42	907.81	3.07
MIZ	0.00	0.00	0.00	0.00	8.27	0.03
TRANSPORTATION	50.61	3.36	123.53	7.75	902.18	3.05
MISCELLANEOUS	0.00	0.00	0.00	0.00	0.00	0.00
<b>GRAND TOTAL</b>	<b>1506</b>	<b>100.00</b>	<b>1594</b>	<b>100.00</b>	<b>29588</b>	<b>100.00</b>

AREAS ARE GENERATED FROM PROPOSED SURFACE UTILISATION PLAN

## BROAD LAND USES FOR SALCET TALUKA

	FINAL RPG-2021 AREA IN HECTARES	FINAL RPG-2021 % OF TALUKA
<b>ECO - 1</b>		
FOREST (Protected/reserved/ national park/wild life)	0.00	0.00
MANGROVE FOREST	191.13	0.65
PRIVATE FOREST	28.25	0.10
WATER BODIES/ nalla/ponds	1357.96	4.59
PADDY FIELD/KHAZAN LANDS	8871.24	29.98
<b>SUB TOTAL</b>	<b>10448.58</b>	<b>35.31</b>
<b>ECO - 2</b>		
ORCHARD	3540.83	11.97
NATURAL COVER	3204.41	10.83
CULTIVABLE	329.34	1.11
SALT PANS	58.77	0.20
FISH FARM / MUD FLATS	11.49	0.04
<b>SUB TOTAL</b>	<b>7144.82</b>	<b>24.15</b>
SETTLEMENT	9896.96	33.45
INSTITUTIONAL	279.40	0.94
INDUSTRY	907.81	3.07
MIZ	8.27	0.03
TRANSPORTATION	902.18	3.05
MISCELLANEOUS	0.00	0.00
<b>GRAND TOTAL</b>	<b>29588</b>	<b>100.00</b>



## **APPENDIX IV**

Taluka-Wise Provision of MIZ and Facilities based on public inputs  
(Bardez, Tiswadi, Mormogao and Salcete)

### MIZ & FACILITITES PROPOSED, BARDEZ TALUKA

Sr..No.	VILLAGE PANCHAYAT	MIZ		D.M.S.		G.M.S.		PLAY GROUND		CREMATORIUM/ CEMETRY		CATTLE POUND		REHABILITA- TION SITE / 20 POINT PROG. SITES	WIDTH OF PROP- OSED ROAD Mts.	LENGTH OF PROP- OSED ROAD Mts.	REMARKS
	Minimum Sizes (recommended)	50000m2	No	20000m2	No	6500m2	No	As proposed by V.P.	No	6500m2	No	2000m2	No	Area in sq.mts.			
1	Aldona	----	----	----	----	√	1	√	7	√	2	----	----	----	6 10 20	6887 1303 1538	
2	Anjuna- Caisua	----	----	√	2	√	1	√	4	√	4	----	----	----	15 10	1857 5056	
3	Arpora-Nagao	----	----	----	----	----	----	√	1	----	----	----	----	----	10 15	2503 1528	
4	Assagao	----	----	----	----	√	1	√	3	√	4	----	----	----	10 6 15 25	1506 291 428 2914	
5	Assonora	√	1	----	----	√	1	√	2	√	2	----	----	----	10 30	3471 2152	
6	Bastora	----	----	----	----	----	----	√	1	√	2	----	----	----	10	1082	
7	Calangute	√	1	√	1	√	1	√	2	√	1	----	----	----	10 15	1131 2209	
8	Camurlim	√	1	----	----	√	2	√	2	√	1	----	----	20 Pt. - 31088 Low cost housing - 95431	10 15 25	4467 4486 1777	
9	Candolim	√	1	√	1	√	1	√	3	√	3	√	1	----	10 15	175 611	
10	Colvale	----	----	----	----	√	1	√	2	√	1	----	----	Fisherman rehabilitation Area 34615	10 15 25 30	4517 1868 1611 2496	
11	Guirim	----	----	----	----	√	1	√	2	√	1	----	----	----	10	1973	
12	Moirá	----	----	----	----	√	1	√	2	√	1	----	----	----	10	1639	
13	Nachinola	√	1	----	----	√	1	√	2	√	2	----	----	----	10	2681	
14	Nandora	----	----	----	----	----	----	√	1	√	2	----	----	20 Pt. - 47725 Low cost of housing - 63855	10	2021	
15	Nerul	----	----	----	----	√	1	----	----	√	1	----	----	----	10	1,492	

Sr.No.	VILLAGE PANCHAYAT	MIZ		D.M.S.		G.M.S.		PLAY GROUND		CREMATORIUM/CEMETRY		CATTLE POUND		REHABILITATION SITE / 20 POINT PROG. SITES	WIDTH OF PROP- OSED ROAD Mts.	LENGTH OF PROP- OSED ROAD Mts.	REMARKS
	Minimum Sizes (recommended)	50000m2	No	20000m2	No	6500m2	No	As proposed by V.P.	No	6500m2	No	2000m2	No	Area in sq.mts.			
16	Oxel	----	----	√	1	√	1	----	----	√	1	----	----	----	10	875	
17	Parra	----	----	----	----	√	1	√	2	√	1	----	----	----	10	2832	
18	Penha de Franca	----	----	----	----	√	1	√	3	√	1	----	----	----	10	1620	
19	Pilerne-Marra	----	----	----	----	----	----	√	2	√	3	----	----	----	10	5622	
20	Pirna	----	----	----	----	----	----	√	1	√	5	----	----	Low cost housing - 136811	10 15	7930 278	
21	Pomburpa-Olaulim	----	----	----	----	----	----	√	3	√	4	----	----	----	10	844	
22	Reis-Magos	----	----	----	----	√	1	√	2	√	4	----	----	----	10	944	
23	Revora	√	1	√	1	√	1	√	4	√	2	----	----	----	10 15	1993 2494	
24	Saligao	----	----	----	----	√	2	√	2	√	1	----	----	Low cost housing - 67378	10	2663	
25	Salvador do Mundo	√	1	----	----	√	1	√	1	√	1	----	----	----	6 10	723 3064	
26	Sangolda	----	----	----	----	----	----	√	2	√	1	----	----	----	10 15	456 895	
27	Siolim-Marna	√	1	√	1	√	1	√	1	----	----	----	----	----	10	378	
28	Siolim-Sodiem	√	1	√	2	√	1	√	6	√	2	----	----	----	10	12236	
29	Sirsaim	√	1	----	----	√	1	√	3	√	3	----	----	----	10	4052	
30	Socorro	----	----	----	----	√	1	√	4	√	5	----	----	----	10 20	5626 1248	
31	Tivim	√	1	----	----	√	1	√	6	√	2	√	1	----	10 30 15	15828 6970 3620	
32	Ucassaim Paliem Punola	√	1	√	1	√	1	√	2	√	2	----	----	----	10	3288	
33	Verla Canca	----	----	----	----	√	1	√	1	√	2	----	----	----	10 20 15	861 1557 692	
Total			12		10		28		79		67		2			157259	

### MIZ & FACILITITES PROPOSED, TISWADI TALUKA

Sr..No.	VILLAGE PANCHAYAT	MIZ		D.M.S.		G.M.S.		PLAY GROUND		CREMATORIUM/ CEMETRY		CATTLE POUND		REHABILIT ATION SITE / 20 POINT PROG. SITES	WIDTH OF PROP- OSED ROAD Mts.	LENGTH OF PROP- OSED ROAD Mts.	REMARKS
	Minimum Sizes (recommended)	50000m2	No	20000m2	No	6500m2	No	As proposed by V.P.	No	6500m2	No	2000m2	No	Area in sq.mts.			
1	Azossim-Mandur	√	1	----	----	----	----	√	1	√	1	----	----	----	25 10	2386 879	
2	Batim	----	----	----	----	√	1	----	----	√	1	----	----	----	10	2151	
3	Carambolim	----	----	----	----	√	1	√	2	√	1	----	----	----	25 10	2469 1585	
4	Chimbel	----	----	----	----	√	1	----	----	√	2	----	----	----	15 10	2223 1727	
5	Chodan-Madel	----	----	----	----	√	2	√	3	√	5	----	----	----	10	227	
6	Corlim	----	----	----	----	√	1	√	2	√	3	----	----	Area for Ind. Workers - 30057	25 10	1653 500	
7	Curca-Bambolim- Taulim	----	----	----	----	√	1	√	1	√	3	----	----	----	10 15	5032 71	
8	Goltim-Navelim	----	----	----	----	----	----	√	1	----	----	----	----	----	10 15	1258 856	
9	Cumbharjua	----	----	----	----	√	1	√	1	----	----	----	----	----	10	1491	
10	Merces	----	----	----	----	√	1	√	1	√	2	----	----	----	15 10 6	1128 2057 576	
11	Neura	----	----	----	----	----	----	√	1	----	----	----	----	----	25	3054	
12	Sao Matias	----	----	----	----	√	1	√	1	√	4	----	----	----	10	1123	
13	Siridao-Pale	----	----	----	----	√	1	√	1	√	1	----	----	----	10	1822	
14	Se-old-Goa	----	----	----	----	√	1	√	3	√	4	----	----	----	15 10	1250 1417	
15	St. Andre (Goa Velha)	----	----	----	----	√	1	√	6	√	1	----	----	----	10	321	
16	St.Cruz	----	----	----	----	----	----	√	2	√	1	----	----	----	10	1683	
17	St.Estevan	----	----	----	----	----	----	----	----	----	2	----	----	----	----	----	
18	St. Lawrence (Agasaim)	----	----	----	----	√	1	√	3	√	2	----	----	----	10 25	1301 1716	
Total			1				14		29		33					41956	

### MIZ & FACILITIES PROPOSED, MURMUGAO TALUKA

Sr.No.	VILLAGE PANCHAYAT	MIZ		D.M.S.		G.M.S.		PLAY GROUND		CREMATORIUM/ CEMETRY		CATTLE POUND		REHABILITA TION SITE / 20 POINT PROG. SITES	WIDTH OF PROP- POSED ROAD Mts.	LENGTH OF PROP- POSED ROAD Mts.	REMARKS
		50000m2	No	20000m2	No	6500m2	No	As proposed by V.P.	No	6500m2	No	2000m2	No	Area in sq.mts.			
1	Cansaulim - Arossim - Cuelim	----	----	----	----	----	----	√	1	√	1	----	----	----	10 6	10273 7092	
2	Cortalim - Quelossim	----	----	----	----	√	1	√	3	√	1	----	----	----	10	3054	
3	Velsao-Pale	----	----	----	----	√	1	√	2	√	3	----	----	----	10 25	4413 1485	
Total							2		6		5					26317	

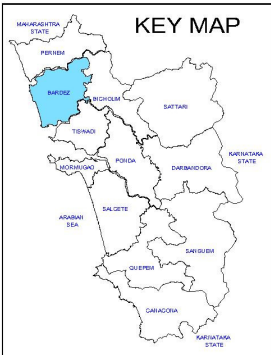
### MIZ & FACILITITES PROPOSED, SALCETE TALUKA

Sr..No.	VILLAGE PANCHAYAT	MIZ		D.M.S.		G.M.S.		PLAY GROUND		CREMATORIUM/ CEMETRY		CATTLE POUND		REHABILIT ATION SITE / 20 POINT PROG. SITES	WIDTH OF PROP- OSED ROAD Mts.	LENGTH OF PROP- OSED ROAD Mts.	REMARKS
	Minimum Sizes (recommended)	50000m2	No	20000m2	No	6500m2	No	As proposed by V.P.	No	6500m2	No	2000m2	No	Area in sq.mts.			
1	Ambelim	----	----	----	----	----	----	√	1	√	1	----	----	----	10	353	
2	Aquem-Baixa	----	----	----	----	----	----	√	1	----	----	----	----	----	----	----	
3	Assolna	----	----	----	----	√	1	√	1	√	3	----	----	----	10	2272	
4	Betalbatim	----	----	----	----	----	----	√	2	√	1	----	----	----	----	----	
5	Cana-Benaulim	----	----	----	----	----	----	√	7	√	1	----	----	----	10	251	
6	Camurlim	----	----	----	----	√	1	√	1	----	----	----	----	----	----	----	
7	Carmona	----	----	----	----	√	1	√	1	----	----	----	----	----	10	405	
8	Cavelossim	----	----	----	----	----	----	√	1	√	1	----	----	----	10 20	1594 291	
9	Chandor- Cavorim	----	----	----	----	----	----	√	3	----	----	----	----	----	----	----	
10	Chinchinim- Deussua	----	----	----	----	√	1	√	2	√	3	----	----	----	10	955	
11	Colva	----	----	----	----	----	----	√	2	√	1	----	----	----	10	2719	
12	Curtorim	√	1	----	----	----	----	√	4	----	----	----	----	----	10	1960	
13	Davorlim- Dicarpale	----	----	----	----	√	1	√	5	√	1	----	----	----	15 10 8	3255 2160 196	
14	Dramapur-Sirlim	----	----	----	----	----	----	√	1	√	2	----	----	----	----	----	
15	Guirdolim	----	----	----	----	√	1	√	2	√	1	----	----	----	10	338	
16	Loutulim	----	----	----	----	√	1	√	2	√	1	----	----	20 Pt prog. Area 51394	N-H	2043	Areas for workers colony
17	Macasana	----	----	----	----	√	1	√	1	----	----	----	----	----	10	237	
18	Navelim	----	----	----	----	----	----	√	7	√	1	----	----	----	10	594	

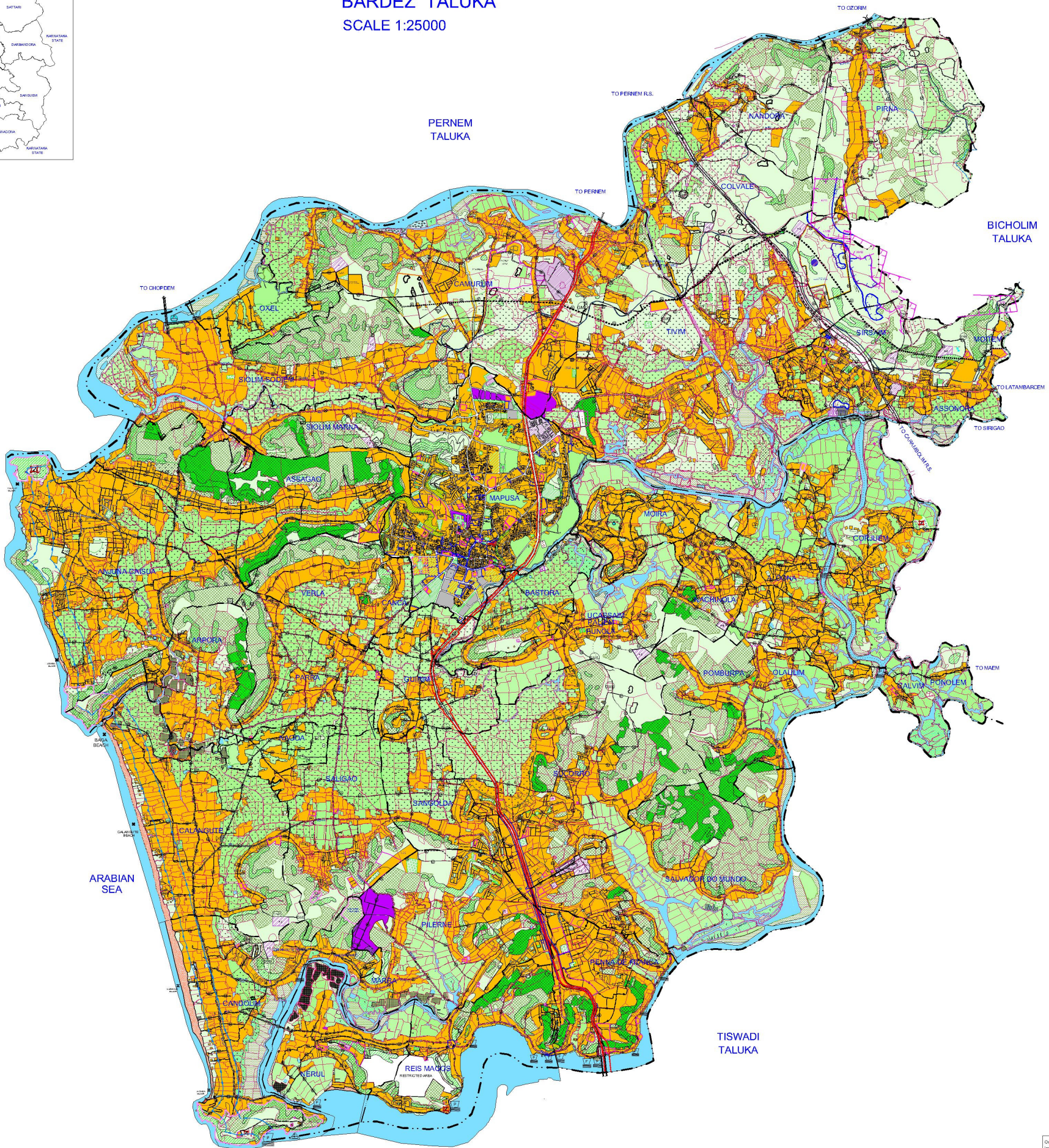
Sr..No.	VILLAGE PANCHAYAT	MIZ		D.M.S.		G.M.S.		PLAY GROUND		CREMATORIUM/ CEMETRY		CATTLE POUND		REHABILITATION SITE / 20 POINT PROG. SITES	WIDTH OF PROP- OSED ROAD Mts.	LENGTH OF PROP- OSED ROAD Mts.	REMARKS
	Minimum Sizes (recommended)	50000m2	No	20000m2	No	6500m2	No	As proposed by V.P.	No	6500m2	No	2000m2	No	Area in sq.mts.			
19	Nuven	----	----	----	----	----	----	√	5	√	1	----	----	----	30 20 10 N-H	1611 469 499 1611	
20	Paroda	√	1	----	----	√	1	√	1	√	1	----	----	----	----	----	
21	Rachol	----	----	----	----	----	----	√	3	----	----	----	----	----	----	----	
22	Raia	----	----	----	----	----	----	√	7	√	1	----	----	----	----	----	
23	Rumdamol Davorlim	----	----	----	----	√	1	√	5	√	1	----	----	----	15 8 10	3255 196 2285	
24	Sao Jose de Areal	----	----	----	----	----	----	√	3	√	1	----	----	----	20 15 10	1069 1016 4275	
25	Sarzora	----	----	----	----	----	----	√	1	√	1	----	----	----	----	----	
26	Seraulim	----	----	----	----	----	----	√	3	√	1	----	----	----	----	----	
27	Telaulim	----	----	----	----	----	----	√	3	----	----	----	----	----	----	----	
28	Varca	----	----	----	----	√	1	√	1	√	2	----	----	----	10	634	
29	Velim	----	----	√	1	----	----	√	2	√	5	√	1	20 pt prog. Area 34688	10	1626	
30	Majorda-Utorda- Calata	----	----	----	----	----	----	√	4	√	2	----	----	----	----	----	
31	Nagoa	----	----	----	----	----	----	√	1	√	1	----	----	----	----	----	
32	Verna	----	----	----	----	----	----	√	1	----	----	----	----	20 Pt Prog. Area 63536	----	----	Area for workers colony -
33	Orlim	----	----	----	----	----	----	√	3	----	----	----	----	----	----	----	
34	Cuncolim M.C.L.	----	----	----	----	√	1	√	2	√	8	----	----	----	----	----	
	Total		2		1		12		89		42		1			38819	

## **APPENDIX V**

### Bardez Surface Utilisation Plan



REGIONAL PLAN FOR GOA-2021  
BARDEZ TALUKA  
SCALE 1:25000



- LAND USES**
- ECOLOGICALLY SENSITIVE AREAS (ECO-1)**
- PRIVATE FOREST (JALCO/STAFF/RESERVE)
  - MANGROVE FORESTS
  - NO DEVELOPMENT SLOPES
  - PADDY FIELDS / KHAZANS
  - RIVERS, NALLAS / PONDS
  - MUD FLATS
  - SAND DUNES / SANDY AREAS
- OTHER ECOLOGICALLY SENSITIVE AREAS (ECO-2)**
- CULTIVABLE LAND
  - ORCHARD
  - NATURAL COVER
  - FISH FARMS
  - IRRIGATION COMMAND AREAS
  - SALT PANES
  - HERITAGE LANDSCAPE
  - ARCHAEOLOGICAL PARKS
- INDUSTRIAL**
- INDUSTRIAL ESTATE
  - GENERAL INDUSTRY
  - SHIPYARDS / REPAIR DOCKS / MARINE INDUSTRY
  - MICRO INDUSTRIAL ZONE
- SETTLEMENTS**
- SETTLEMENT AREAS
  - DEVELOPMENT SUBJECT TO CONFIRMATION BY AGRICULTURE DEPARTMENT REGARDING UNSUITABILITY FOR AGRICULTURE
  - COMMERCIAL
  - INSTITUTIONAL
- TRANSPORTATION**
- NATIONAL HIGHWAY
  - NATIONAL HIGHWAY PHD ALIGNMENT
  - STATE HIGHWAY (30m)
  - MAJOR DISTRICT ROADS (25m)
  - MAIN PANCHAYAT ROADS (15m)
  - OTHER PANCHAYAT ROADS (10m)
  - OTHER ROADS (Minimum 6m)
  - PROPOSED ROAD (30m)
  - PROPOSED ROAD (25m)
  - PROPOSED ROADS (15m)
  - PROPOSED ROADS (10m)
  - RAILWAY WITH STATION
  - TRADE & TRANSPORT / PARKING
- ADMINISTRATIVE BOUNDARIES**
- TALUKA BOUNDARY
  - PANCHAYAT BOUNDARY
  - MUNICIPAL BOUNDARY
  - VILLAGE BOUNDARY
  - SURVEY BOUNDARY
- OTHERS**
- CREMATORIUM
  - PLAY GROUND
  - RESTRICTED AREA
  - OPEN SPACE
  - QUARRY
  - ACTIVE MINING/LEASE
  - MINING ACTIVITY / DUMPS OUTSIDE ACTIVE MINING AREA
  - 500 MTR. LINE FROM HTL
  - 200 MTR. LINE FROM HTL
  - BUFFER LINE
  - CANAL / DISTRIBUTORIES
  - CATTLE POND
  - ARCHAEOLOGICAL SITE WITH BUFFER
  - GROWTH HUB
  - GARBAGE MANAGEMENT SITE
  - DISASTER MANAGEMENT SYSTEM
  - SCH
  - HEALTH CENTER
  - V.P
  - VILLAGE PANCHAYAT OFFICE
  - GRAZING GROUND
  - CRUISE HARBORS
  - MARINA
  - PASSENGER JETTY
  - TRANSPORT JETTY
  - FISHING JETTY
  - BRIDGE
  - PROPOSED BRIDGE
  - FORT
  - WATER TANK

**NOTE :-**

1. This plan showing proposed Surface Utilization of BARDEZ TALUKA forms part of the Regional Plan for GOA-2021 which has been approved by the T.C.P. Board in its 13th meeting held on 21st September 2011 & approved by Govt. vide note no. 28972/2010(RP-21) dated 21/09/2011.

2. All the C.D.P.s & Zoning Plans (Z.P.s) prepared in the past by P.D.A. & P.D.A. (Z.P.) as the case may be and are in force (both in P.D.A. areas & non P.D.A. areas) have been incorporated in the RP-G-2021. Respective Z.P.s / Zoning Plans shall be referred for details and development control of developable areas only as per RP-G-2021. In case of any variations, the matter shall be referred to the T.C.P. Board for its consideration.

3. Private Forest areas indicated in this plan are subject to the final confirmation & demarcation by the competent Authorities.

4. Surface Utilization Plans shall be read with the report of RP-G-2021 (Release Plan) as dependent.

5. This Surface Utilization Plan shows broad land uses which are to be read along with guidelines for interpretation of permissible land uses.

6. All past covenants/developments like sub-division approvals by competent Authorities, conversion issued under URG, building approvals/NOCs, granted, shall be honoured for specific uses, if not effected in 10th year.

7. All NOCs for Land Acquisition for specific purposes under the L.A. Act 1984 issued by T.C.P. Dept for specific uses (activities) shall be treated as conforming to the said use for which NOC was issued. The cases shall not hold good, in case where acquisition proceedings are dropped by the Govt. and shall be treated as per uses indicated in the Surface Utilization Plan.

8. Notwithstanding anything contained in this Plan, the developments shall be subject to the provisions of Tenancy Act, Land Use Regulation Act, Forest Conservation Act, Highways Act, Ancient Monuments and Archaeological Sites and Remains Act (ASR) and Central (S.I.) notifications issued by the NODR or any other Act/Rules as applicable.

9. The lines reflected on this map / plan are based on the data supplied by Directorate of Mines & Geology, Govt. of Goa but does not confirm by legal validity as per legal requirements.

Original or Approved: Map - Division Photo scale 1:5000 shall be used upto 500m; irrespective of the VP Status of Settlement Category.

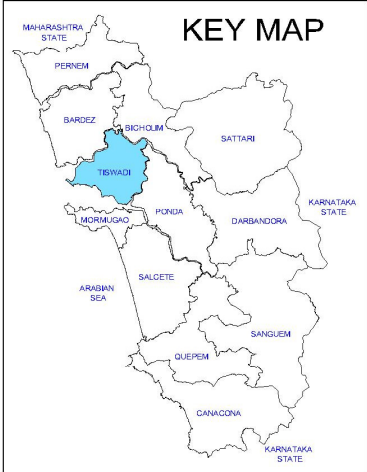
BARDEZ TALUKA	
REGIONAL PLAN FOR GOA-2021 (RP-G-21)	SEPTEMBER 2011 FINAL
REGIONAL PLAN DIVISION TOWN AND COUNTRY PLANNING DEPT. GOVT. OF GOA	

0.75 0.5 0 1 2Kms

N

## **APPENDIX VI**

### **Tiswadi Surface Utilisation Plan**



# REGIONAL PLAN FOR GOA-2021

## TISWADI TALUKA

SCALE 1:25000

### LAND USES

#### ECOLOGICALLY SENSITIVE AREAS (ECO-1)

- WILD LIFE BIRD SANCTUARY
- 1 KM BUFFER (WL)
- PRIVATE FOREST (SUBJECT TO GOVERNANCE)
- MANGROVE FORESTS
- NO DEVELOPMENT SLOPES
- PADDY FIELDS / KHAZANS
- RIVERS, NALLAS / PONDS
- MUD FLATS

#### OTHER ECOLOGICALLY SENSITIVE AREAS (ECO-2)

- CULTIVABLE LAND
- ORCHARD
- NATURAL COVER
- FISH FARMS
- IRRIGATION COMMAND AREAS
- SALT PANES
- HERITAGE LANDSCAPE
- ARCHAEOLOGICAL PARKS
- CONSERVATION BOUNDARY
- HERITAGE TRAIL AND BUFFER
- HERITAGE TRAIL

### INDUSTRIAL

- INDUSTRIAL ESTATE
- GENERAL INDUSTRY
- MICRO INDUSTRIAL ZONE
- SHIPYARDS / REPAIR DOCKS / MARINE INDUSTRY

### SETTLEMENTS

- SETTLEMENT AREAS
- DEVELOPMENT SUBJECT TO CONFIRMATION BY AGRICULTURE DEPARTMENT, REGARDING UNSUITABILITY FOR AGRICULTURE.
- COMMERCIAL
- INSTITUTIONAL

### TRANSPORTATION

- NATIONAL HAIGHWAY
- NATIONAL HAIGHWAY PWD ALIGNMENT
- MAJOR DISTRICT ROADS (25m)
- MAIN PANCHAYAT ROADS (15m)
- OTHER PANCHAYAT ROADS (10m)
- OTHER ROADS (MINIMUM 6m)
- PROPOSED ROAD
- PROPOSED ROAD (25m)
- PROPOSED ROADS (15m)
- PROPOSED ROADS (10m)
- RAILWAY WITH STATION
- BUS TERMINAL / BUS STAND

### ADMINISTRATIVE BOUNDARIES

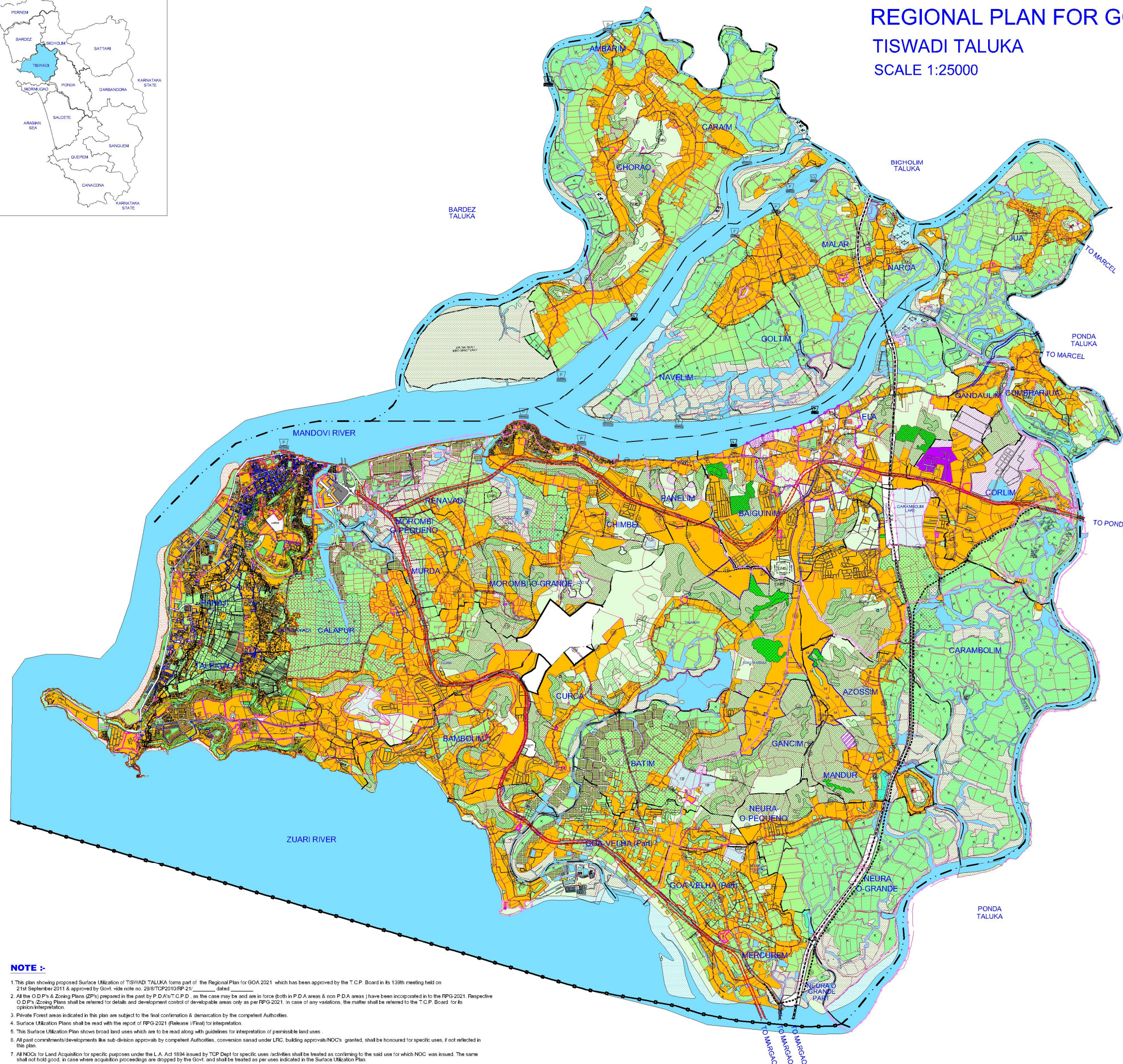
- DISTRICT BOUNDARY
- TALUKA BOUNDARY
- PANCHAYAT BOUNDARY
- O.D.P BOUNDARY
- VILLAGE BOUNDARY
- SURVEY BOUNDARY

### OTHERS

- CREMATORIUM
- PLAY GROUND
- OPEN SPACE
- QUARRY
- RESTRICTED AREA
- CATTLE POND
- GARBAGE MANAGEMENT SITE
- ARCHEOLOGICAL SITE WITH BUFFER
- PASSENGER JETTY
- LONGE JETTY
- TRANSPORT JETTY
- FISHING JETTY
- BRIDGE
- PROPOSED BRIDGE
- FORT

Original or Approved Sub-Division Plots upto 350m will be allowed upto 80 FAR irrespective of the VP Status of Settlement Category.

TISWADI TALUKA	
REGIONAL PLAN FOR GOA-2021 (RPG-21)	SEPTEMBER 2011 FINAL
REGIONAL PLAN DIVISION TOWN AND COUNTRY PLANNING DEPT. GOVT. OF GOA	

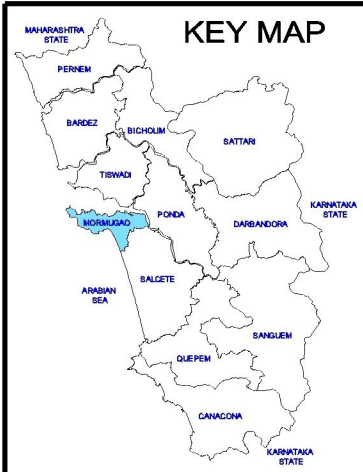


### NOTE :-

- This plan showing proposed Surface Utilization of TISWADI TALUKA forms part of the Regional Plan for GOA 2021 which has been approved by the T.C.P. Board in its 139th meeting held on 21st September 2011 & approved by Govt. vide note no. 29/8/TCP/2010/RP-21 dated \_\_\_\_\_.
- All the O.D.P's & Zoning Plans (ZPs) prepared in the past by P.D.A./T.C.P.D. as the case may be and are in force (both in P.D.A areas & non P.D.A areas) have been incorporated in to the RPG-2021. Respective O.D.P's /Zoning Plans shall be referred for details and development control of developable areas only as per RPG-2021. In case of any variations, the matter shall be referred to the T.C.P. Board for its opinion/interpretation.
- Private Forest areas indicated in this plan are subject to the final confirmation & demarcation by the competent Authorities.
- Surface Utilization Plans shall be read with the report of RPG-2021 (Release /Final) for interpretation.
- This Surface Utilization Plan shows broad land uses which are to be read along with guidelines for interpretation of permissible land uses.
- All past commitments/developments like sub-division approvals by competent Authorities, conversion sanad under LRS, building approvals/NOC's granted, shall be honoured for specific uses, if not reflected in this plan.
- All NOCs for Land Acquisition for specific purposes under the L.A. Act 1894 issued by TCP Dept for specific uses /activities shall be treated as conforming to the said use for which NOC was issued. The same shall not hold good, in case where acquisition proceedings are dropped by the Govt. and shall be treated as per uses indicated in the Surface Utilization Plan.
- Notwithstanding anything contained in this Plan, the developments shall be subject to the provisions of Tenancy Act, Land Use Regulation Act, Forest Conservation Act, Highways Act, Ancient Monuments and Archaeological Sites and Remains Act (State and Central) E/A notifications issued by the MOEF or any other Act/Rule as applicable.

## **APPENDIX VII**

### **Mormogao Surface Utilisation Plan**



# REGIONAL PLAN FOR GOA-2021

## MORMUGAO TALUKA

SCALE 1:25000

### LAND USES

#### ECOLOGICALLY SENSITIVE AREAS (ECO-1)

- PROTECTED / RESERVED FORESTS
- MANGROVE FORESTS
- NO DEVELOPMENT SLOPES
- PADDY FIELDS / KHAZANS
- RIVERS & NALLAS / PONDS
- MUD FLATS
- SAND DUNES / SANDY AREAS

#### OTHER ECOLOGICALLY SENSITIVE AREAS (ECO-2)

- ORCHARD
- NATURAL COVER
- FISH FARM
- HERITAGE LANDSCAPE

### INDUSTRIAL

- INDUSTRIAL ESTATE
- GENERAL INDUSTRY
- SHIPYARDS / REPAIR DOCKS / MARINE INDUSTRY

### SETTLEMENTS

- SETTLEMENT AREAS
- DEVELOPMENT SUBJECT TO CONFIRMATION BY AGRICULTURE DEPARTMENT, REGARDING UNSUITABILITY FOR AGRICULTURE.

- COMMERCIAL
- INSTITUTIONAL

### TRANSPORTATION

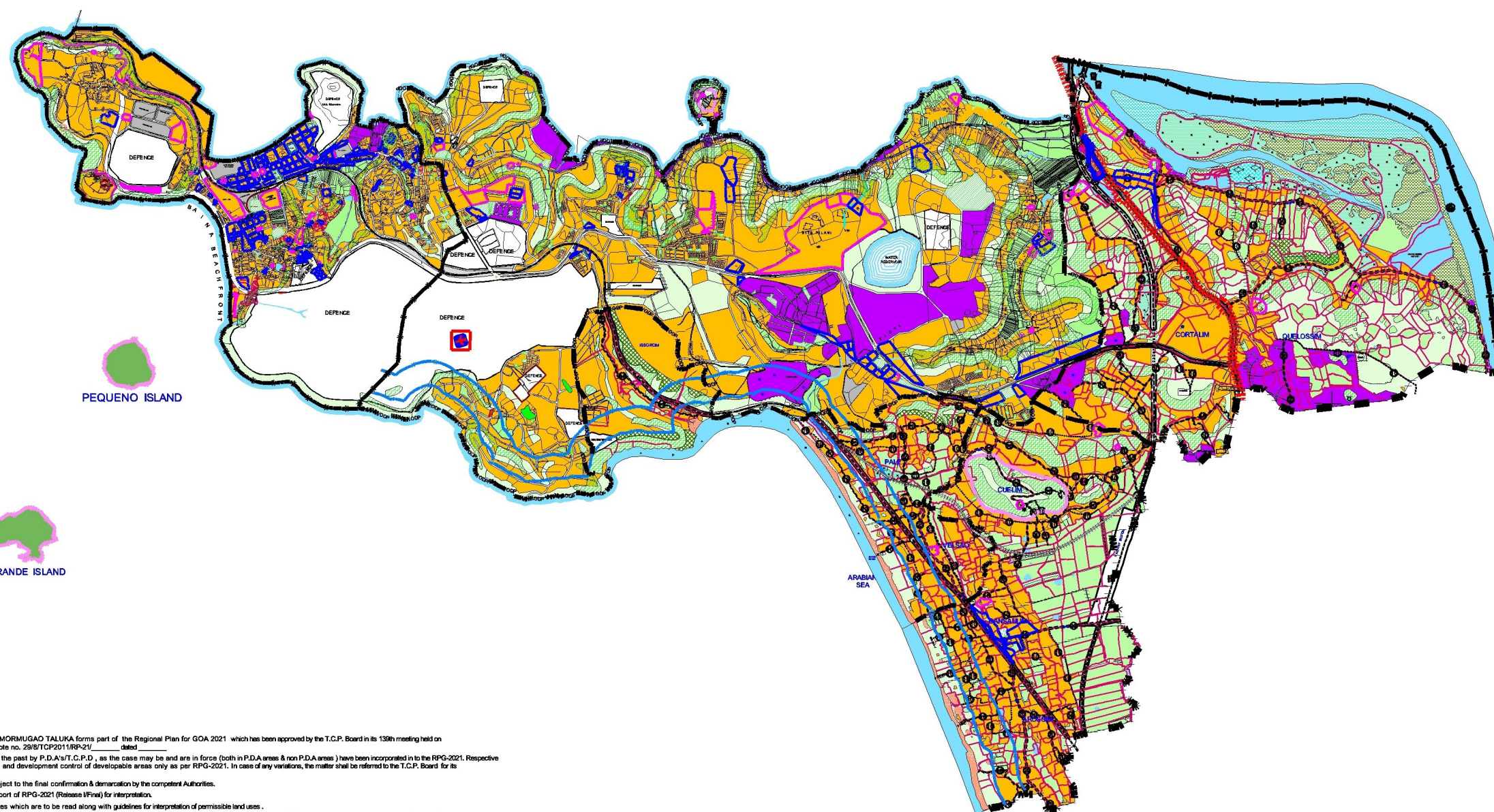
- NATIONAL HAIGHWAY
- NATIONAL HAIGHWAY PWD ALIGNMENT
- MAJOR DISTRICT ROADS (25m)
- MAIN PANCHAYAT ROADS (15m)
- OTHER PANCHAYAT ROADS (10m)
- PROPOSED ROAD (25m)
- PROPOSED ROADS (15m)
- PROPOSED ROADS (10m)
- RAILWAY WITH STATION
- PROPOSED RAILWAY
- TRADE & TRANSPORT / PARKING
- DOMESTIC AIRPORT

### ADMINISTRATIVE BOUNDARIES

- DISTRICT BOUNDARY
- TALUKA BOUNDARY
- PANCHAYAT BOUNDARY
- MUNICIPAL BOUNDARY
- O.D.P. BOUNDARY
- VILLAGE BOUNDARY
- SURVEY BOUNDARY

### OTHERS

- CREMATORIUM
- PLAY GROUND
- OPEN SPACE
- RESTRICTED AREA
- QUARRY
- 500 MTR. LINE FROM HTL
- 200 MTR. LINE FROM HTL
- GARBAGE MANAGEMENT SITE
- SCHOOL
- HEALTH CENTER
- VILLAGE PANCHAYT OFFICE
- PASSENGER JETTY
- BRIDGE
- MARINA
- TOURIST BEACH HEAD/TOURIST PLACES
- WATER TANK



### NOTE :-

- This plan showing proposed Surface Utilization of MORMUGAO TALUKA forms part of the Regional Plan for GOA 2021 which has been approved by the T.C.P. Board in its 139th meeting held on 21st September 2011 & approved by Govt. vide note no. 29/B/TCP2011/RP-21/ dated \_\_\_\_\_
- All the O.D.P.s & Zoning Plans (ZPs) prepared in the past by P.D.A.'s/T.C.P.D., as the case may be and are in force (both in P.D.A areas & non P.D.A areas) have been incorporated in to the RFG-2021. Respective O.D.P.s (Zoning Plans) shall be referred for details and development control of developable areas only as per RFG-2021. In case of any variations, the matter shall be referred to the T.C.P. Board for its opinion/interpretation.
- Private Forest areas indicated in this plan are subject to the final confirmation & demarcation by the competent Authorities.
- Surface Utilization Plans shall be read with the report of RPG-2021 (Release I/Final) for interpretation.
- This Surface Utilization Plan shows broad land uses which are to be read along with guidelines for interpretation of permissible land uses.
- All past commitments/developments like sub-division approvals by competent Authorities, conversion sanad under LRC, building approvals/NOCs granted, shall be honoured for specific uses, if not reflected in this plan.
- All NOCs for Land Acquisition for specific purposes under the L.A. Act 1894 issued by TCP Dept for specific uses /activities shall be treated as conforming to the said use for which NOC was issued. The same shall not hold good, in case where acquisition proceedings are dropped by the Govt. and shall be treated as per uses indicated in the Surface Utilization Plan.
- Notwithstanding anything contained in this Plan, the developments shall be subject to the provisions of Tenancy Act, Land Use Regulation Act, Forest Conservation Act, Highways Act, Ancient Monuments and Archaeological Sites and Remains Act (State and Central) EIA notifications issued by the MOEF or any other Act/Rule as applicable.

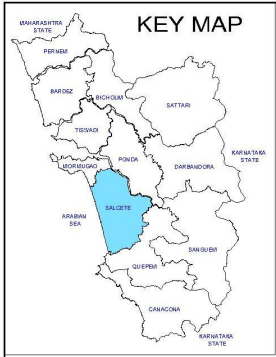
Original or Approved Sub - Division Plots upto 350 m<sup>2</sup> will be allowed upto 80 FAR irrespective of the VP Status of Settlement Category.

MORMUGAO TALUKA	
REGIONAL PLAN FOR GOA-2021 (RPG-21)	SEPTEMBER 2011 FINAL
REGIONAL PLAN DIVISION TOWN AND COUNTRY PLANNING DEPT. GOVT. OF GOA	

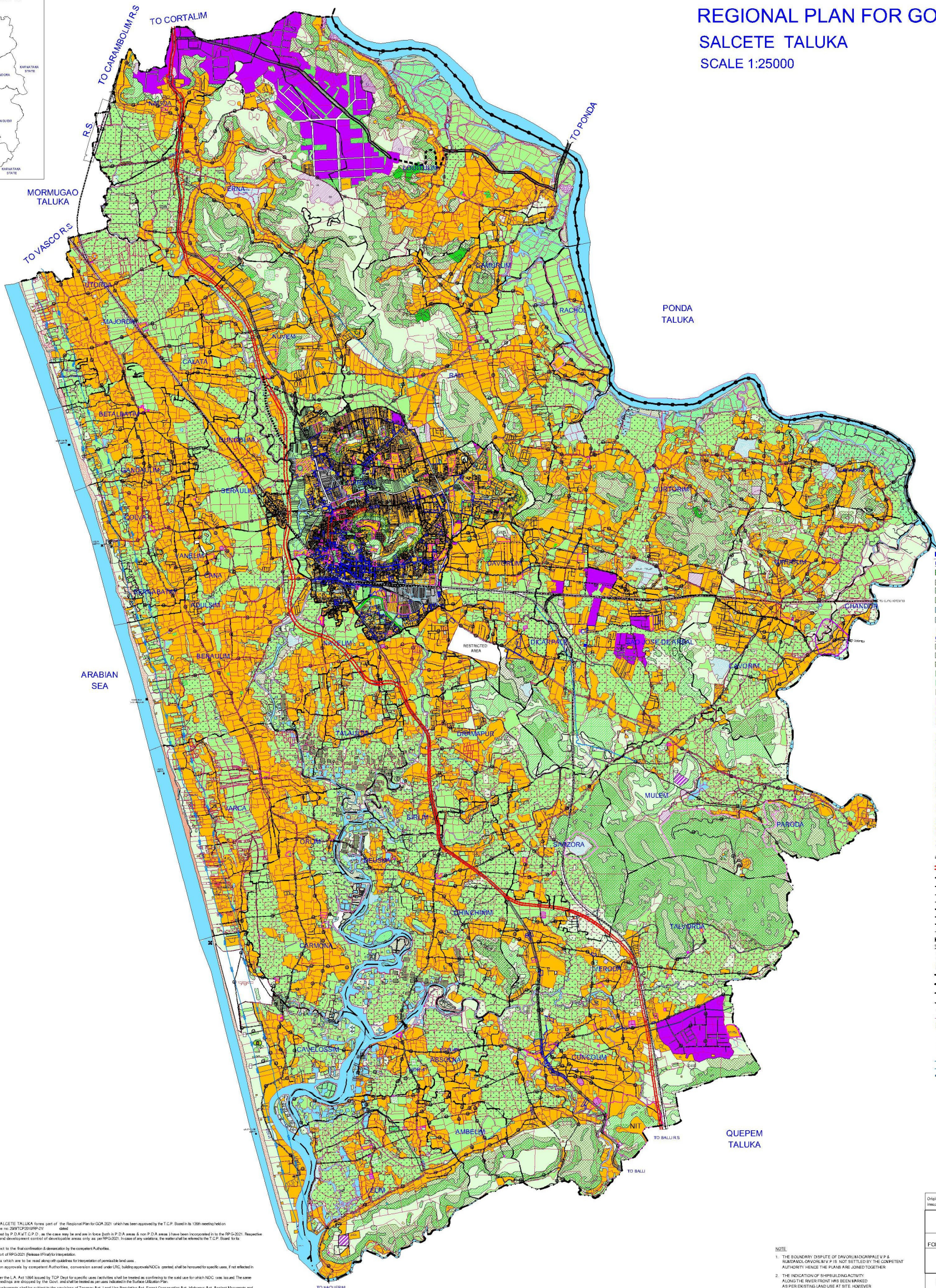


## **APPENDIX VIII**

### **Salcete Surface Utilisation Plan**



REGIONAL PLAN FOR GOA-2021  
SALCETE TALUKA  
SCALE 1:25000



- LAND USES**
- ECOLOGICALLY SENSITIVE AREAS (ECO-1)**
- PRIVATE FOREST
  - MANGROVE FORESTS
  - NO DEVELOPMENT SLOPES
  - PADDY FIELDS / KHAZANS
  - RIVERS & NALLAS / PONDS
  - MUD FLATS
  - SANDY AREA
- OTHER ECOLOGICALLY SENSITIVE AREAS (ECO-2)**
- CULTIVABLE LAND
  - ORCHARD
  - NATURAL COVER
  - WATER COMMAND AREAS
  - FISH FARMS
  - SALT PANS
  - HERITAGE LANDSCAPE
  - ARCHAEOLOGICAL PARKS
  - CONSERVATION BOUNDARY
  - RESTRICTED AREA
- INDUSTRIAL**
- INDUSTRIAL ESTATE
  - GENERAL INDUSTRY
  - MICRO INDUSTRIAL ZONE
  - SHIPYARDS / REPAIR DOCKS / MARINE INDUSTRY
- SETTLEMENTS**
- SETTLEMENT AREAS
  - DEVELOPMENT SUBJECT TO CONFIRMATION BY AGRICULTURE DEPARTMENT REGARDING UNSUITABILITY FOR AGRICULTURE
  - COMMERCIAL
  - INSTITUTIONAL
- TRANSPORTATION**
- EXISTING**
- NATIONAL HIGHWAY
  - NATIONAL HIGHWAY PWD ALIGNMENT
  - MAJOR DISTRICT ROADS (25m)
  - MAIN PANCHAYAT ROADS (15m)
  - OTHER PANCHAYAT ROADS (10m)
  - OTHER ROADS (MINIMUM 8m)
  - PROPOSED ROAD (25m)
  - PROPOSED ROADS (15m)
  - PROPOSED ROADS (10m)
  - PROPOSED ROADS (8m)
  - RAILWAY
  - PROPOSED RAILWAY LINE
  - TRADE & TRANSPORT
- ADMINISTRATIVE BOUNDARIES**
- DISTRICT BOUNDARY
  - TALUKA BOUNDARY
  - PANCHAYAT BOUNDARY
  - MUNICIPAL BOUNDARY
  - VILLAGE BOUNDARY
  - SURVEY BOUNDARY
- OTHERS**
- CREMA TORUM
  - PLAY GROUND
  - OPEN SPACES
  - 500 MTR. LINE FROM HTL
  - 200 MTR. LINE FROM HTL
  - CANAL / DISTRIBUTORIES
  - ECO - TOURISM SITE
  - CATTLE POND
  - DISASTER MANAGEMENT SITE
  - ARCHAEOLOGICAL SITE WITH BUFFER
  - GARBAGE MANAGEMENT SITE
  - PASSENGER JETTY
  - LOADING JETTY
  - BRIDGE
  - PROPOSED BRIDGE
  - TOURIST BEACH HEAD
  - WATER TANK

**NOTE :-**

1. This plan showing proposed Surface Utilization of SALCETE TALUKA forms part of the Regional Plan for GOA-2021 which has been approved by the T.C.P. Board in its 138th meeting held on 21st September, 2011 & approved by Govt. vide note no. 2987/2010/TP/2011 dated 21.09.2011.

2. All the O.D.P.s & Zoning Plans (Z.P.s) prepared in the past by P.D.A. at T.C.P.D. as the case may be and are in force both in P.D.A. areas & non P.D.A. areas have been incorporated in the RP-G-2021. Respective Z.P.D.s & Zoning Plans shall be referred for details and development control of developable areas only as per RP-G-2021. Issued of any variation, the matter shall be referred to the T.C.P. Board for its consideration.

3. Private Forest areas indicated in this plan are subject to the final confirmation & demarcation by the competent authorities.

4. Surface Utilization Plans shall be read with the report of RP-G-2021 (please refer) for interpretation.

5. This Surface Utilization Plan shows land use which are to be read along with guidelines for interpretation of suitable land use.

6. All past commitments/developments (the sub-division approvals by competent authorities, conversion issued under URC, building approval/NOCs granted, shall be honoured for specific uses, if not reflected in this plan).

7. All NOCs for Land Acquisition for specific purposes under the L.A. Act 1984 issued by T.C.P. Dept for specific uses/activities shall be treated as conforming to the said use for which NOC was issued. The same shall not hold good, in case where acquisition proceedings are dropped by the Govt. and shall be treated as per uses indicated in the Surface Utilization Plan.

8. Notwithstanding anything contained in this Plan, the developments shall be subject to the provisions of Tenancy Act, Land Use Regulation Act, Forest Conservation Act, Highway Act, Ancient Monuments and Archaeological Sites and Remains Act (State and Central) EIA notifications issued by the MDEF or any other Act/Rule as applicable.

**NOTE**

1. THE BOUNDARY DISPUTE OF DAVOR/UDKORPALE V.P.A. RAJENDRA/UDKORPALE V.P.S. NOT SETTLED BY THE COMPETENT AUTHORITY, HENCE THE PLANS ARE JOINED TOGETHER.

2. THE INDICATION OF SHIPBUILDING ACTIVITY ALONG THE RIVER FRONT HAS BEEN MARKED AS PER EXISTING LAND USE AT SITE, HOWEVER THIS DOES NOT CONFIRM ANY LEGAL STATUS.

Original or Approved Sub-Division Plans upto 200 m will be allowed upto 60 FAR irrespective of the V.P. Status of Settlement Category.

SALCETE TALUKA	
REGIONAL PLAN FOR GOA-2021 (RP-G-21)	SEPTEMBER 2011 FINAL
REGIONAL PLAN DIVISION TOWN AND COUNTRY PLANNING DEPT. GOVT. OF GOA	

0.75 0.5 0 1 2Kms

N

## **APPENDIX IX**

Final Classification of Settlements (Table)

## CLASSIFICATION OF SETTLEMENTS

S.No.	VP1	S.No.	VP2
<b>Pernem</b>			
1	Casne-Amberem-Poroscadem	1	Querim -Tiracol
2	Dhargalim	2	Palyem
3	Virnoda	3	Arambol
		4	Corgao
		5	Mandrem
		6	Morjim
		7	Agarwada-chopdem
		8	Parcem
		9	Tuem
		10	Varcond
		11	Torxem
		12	Tamboxem-Mopa-Uguem
		13	Chandel
		14	Casarvarne
		15	Ozorim
		16	Alorna
		17	Ibrampur
<b>Bardez</b>			
1	Calangute	1	Pirna
2	Candolim	2	Nandora
3	Nerul	3	Carmurlim
4	Tivim	4	Oxel
5	Colvale	5	Siolim-Sodiem
6	Revora	6	Siolim-Marna
7	Reis-Magos	7	Socorro
8	Penha de Franca	8	Salvador do Mundo
9	Pilerne-Marra	9	Assagao
		10	Sirsaim
		11	Assonora
		12	Aldona
		13	Moirá
		14	Nachinola
		15	Bastora
		16	Ucassaim Paliem Punola
		17	Pomburpa-Olaulim
		18	Verla Canca
		19	Anjuna
		20	Arpora-Nagoa
		21	Parra
		22	Guirim
		23	Sangolda
		24	Saligao

## CLASSIFICATION OF SETTLEMENTS

S.No.	VP1	S.No.	VP2
<b>Bicholim</b>			
1	Cudnem	1	Mencurem - Dhumashem
2	Karapur-Sarvan	2	Salem
3	Mulgao	3	Latambarcem
4	Pale-Cotombi	4	Advalpale
5	Sirigao	5	Ona-Maulinguem-Curchirem
		6	Mayem Vainginim
		7	Naroa
		8	Piligao
		9	Amona
		10	Navelim
		11	Surla
		12	Velguem
<b>Sattari</b>			
1	Mauxi	1	Dongurli-Thane
2	Honda	2	Querim
		3	Morlem
		4	Poriem
		5	Nagargaon
		6	Pissurlem
		7	Sanvordem
		8	Cotorem
		9	Birondem
		10	Guleli
<b>Tiswadi</b>			
1	Corlim	1	Azossim-Mandur
2	Curca-Bambolim-Talaulim	2	Batim
3	Se-Old-Goa	3	Carambolim
4	Chimbel	4	Chodan-Madel
5	Merces	5	Goltim-Navelim
		6	S.t Lawrence (Agasaim)
		7	Cumbharjua
		8	Neura
		9	Sao Matias
		10	Siridao-Pale
		11	St.Andre (Goa Velha)
		12	St.Estevam
		13	S.t Cruz

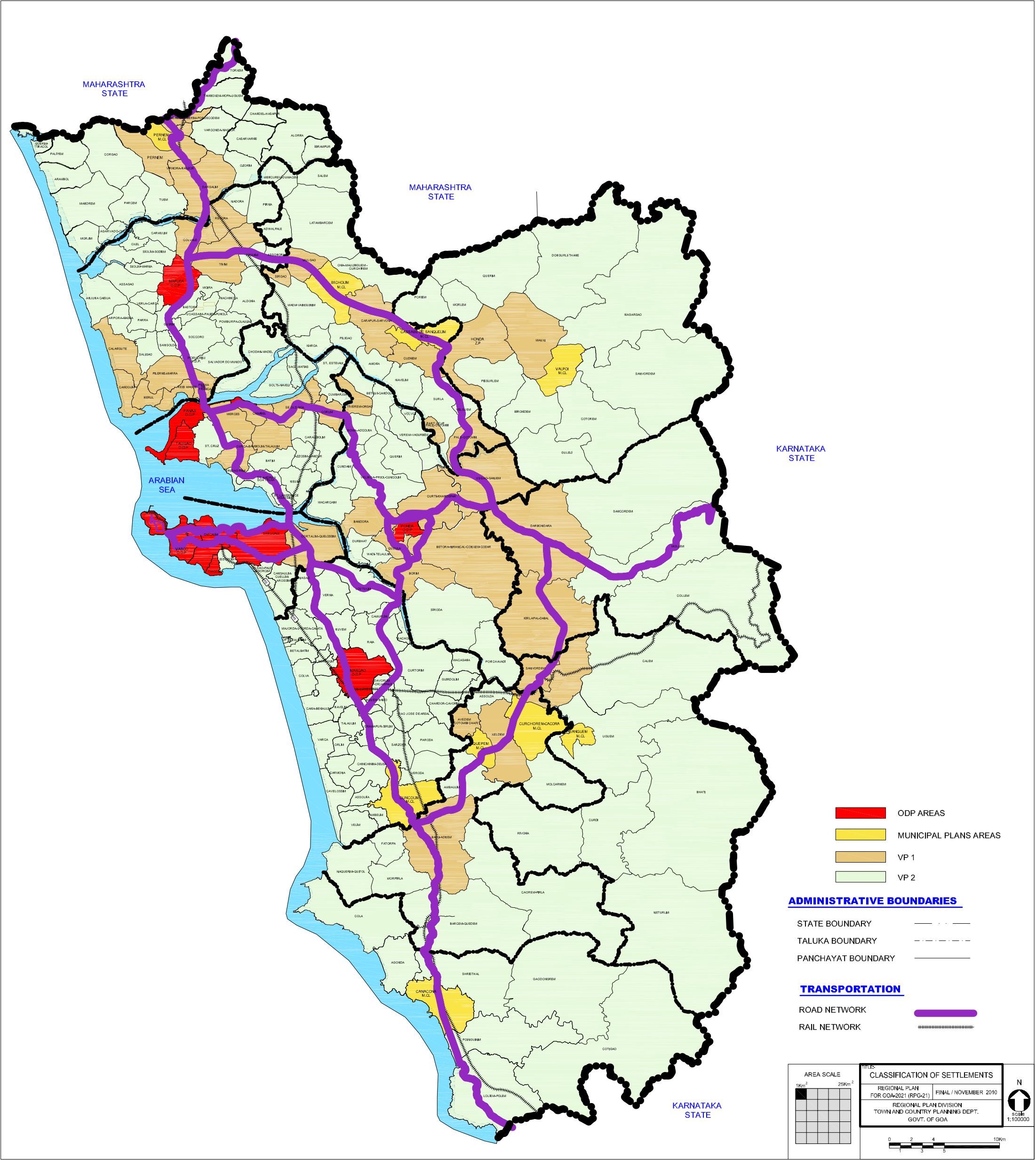
CLASSIFICATION OF SETTLEMENTS			
S.No.	VP1	S.No.	VP2
<b>Ponda</b>			
1	Bandora	1	Betki-Khandola
2	Betora-Nirancal-Conxem-Codar	2	Cundaim
3	Borim	3	Durbhat
4	Curti-Khandepar	4	Marcaim
5	Queula	5	Panchawadi
6	Tivrem-Orgao	6	Querim
7	Usgao-Ganjem	7	Verem-Vagurme
		8	Shiroda
		9	Veling-Priol-Cuncolem
		10	Volvoi
		11	Wadi-Talaulim
		12	Bhoma-Adcolna
<b>Salcete</b>			
		1	Colva
		2	Navelim
		3	Verna
		4	Nagao
		5	Davorlim
		6	Rumdamol Davorlim
		7	Nuven
		8	Aquem
		9	Curtorim
		10	Macasana
		11	Guirdolim
		12	Sao Jose de Areal
		13	Telaulim
		14	Dramapur-Sirlim
		15	Varca
		16	Orlim
		17	Sarzora
		18	Paroda
		19	Chinchinim
		20	Carmona
		21	Assolna
		22	Ambelim
		23	Cavelossim
		24	Velim

CLASSIFICATION OF SETTLEMENTS			
S.No.	VP1	S.No.	VP2
		25	Chandor
		26	Majorda-Utorda-Calata
		27	Loutulim
		28	Camurlim
		29	Betalbatim
		30	Seraulim
		31	Raia
		32	Rachol
		33	Benaulim
		34	Cuncolim Municipal
<b>Dharbandora</b>			
1	Dharbandora	1	Sancordem
2	Kirlapal-Dabal	2	Molem
		3	Colem
<b>Sanguem</b>			
1	Sanvordem	1	Calem
		2	Uguem
		3	Bhati
		4	Curdi
		5	Rivona
		6	Neturlim
<b>Quepem</b>			
1	Balli-Adnem	1	Assolda
2	Xeldem	2	Molcornem
3	Avedem-Cotombi-Chaifi	3	Ambaulim
		4	Fatorpa
		5	Naqueri-Quitol
		6	Morpila
		7	Barcem-Quedem
		8	Cavorem-Pirla
<b>Canacona</b>			
		1	Agonda
		2	Cola
		3	Cotigao
		4	Gaondongrem
		5	Loliem-Polem
		6	Poinguinim
		7	Shristhal (Part)

CLASSIFICATION OF SETTLEMENTS			
S.No.	VP1	S.No.	VP2
<b>MARMUGAO</b>			
1	Cortalim-Quelossim	1	Velsao-Pale
		2	Cansaulim-Cuelim

## **APPENDIX X**

Map showing Final Classification of Settlements

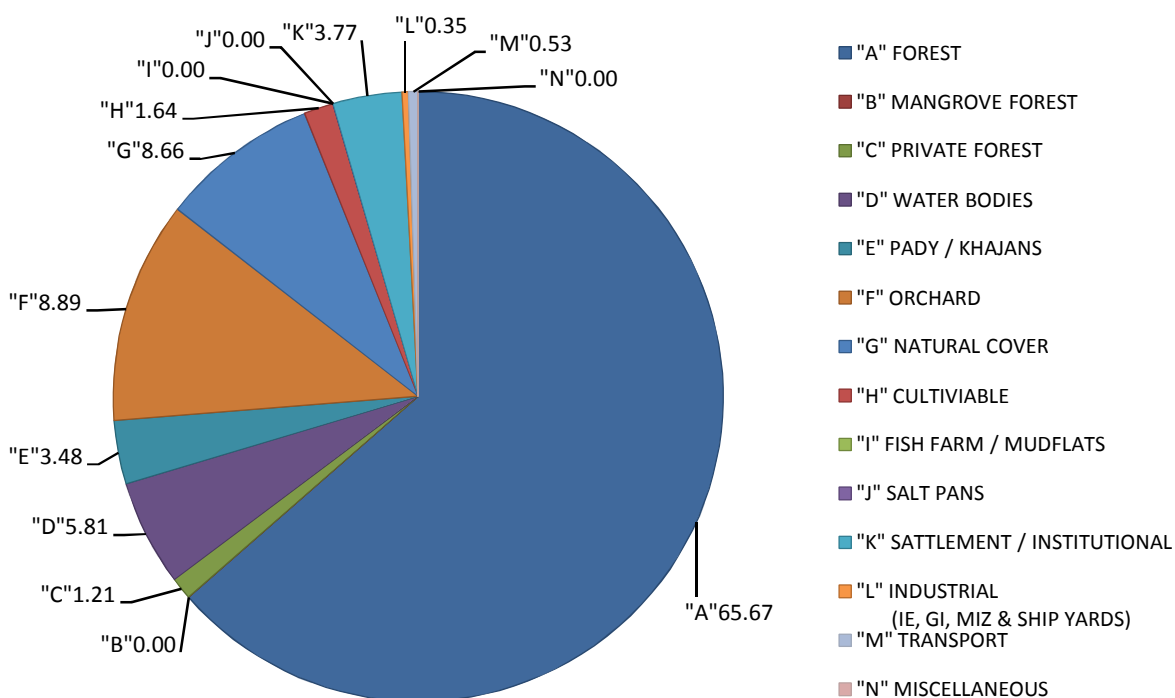


## **APPENDIX XI**

Land Use Table: Sanguem Taluka

## BROAD LAND USES FOR SANGUEM TALUKA

AREA IN HECTARES	52889.00	
	FINAL RPG-2021	FINAL RPG-2021
	AREA IN HECTARES	% OF TALUKA
<b>ECO - 1</b>		
FOREST (Protected/reserved/ national park/wild life)	33626.63	63.58
MANGROVE FOREST	0.00	0.00
PRIVATE FOREST	619.95	1.17
WATER BODIES/ nalla/ponds	2975.02	5.63
PADDY FIELD/KHAZAN LANDS	1781.34	3.37
<b>SUB TOTAL</b>	<b>39002.93</b>	<b>73.74</b>
<b>ECO - 2</b>		
ORCHARD	6232.70	11.78
NATURAL COVER	4434.25	8.38
CULTIVABLE	837.63	1.58
SALT PANS	0.00	0.00
FISH FARM / MUD FLATS	0.00	0.00
<b>SUB TOTAL</b>	<b>11504.58</b>	<b>21.75</b>
SETTLEMENT	1899.66	3.59
INSTITUTIONAL	29.72	0.06
INDUSTRY	157.60	0.30
MIZ	24.05	0.05
TRANSPORTATION	270.80	0.51
MISCELLANEOUS	0.00	0.00
<b>GRAND TOTAL</b>	<b>52889</b>	<b>100.00</b>



## **APPENDIX XII**

Provision of MIZ and Facilities based on public inputs: Sattari Taluka

### MIZ & FACILITITES PROPOSED, SATTARI TALUKA

Sr..No.	VILLAGE PANCHAYAT	MIZ		D.M.S.		G.M.S.		PLAY GROUND		CREMATORIUM/ CEMETRY		CATTLE POUND		REHABIL- ITATION SITE / 20 POINT PROG. SITES	WIDTH OF PROP- POSED ROAD MTS.	LENGTH OF PROP- POSED ROAD Mts.	HEALTH CENTRE	REMARKS
	Minimum Sizes (recommended)	50000m2	No	20000m2	No	6500m2	No	As propose d by V.P.	No	6500m2	No	2000m2	No	Area in sq.mts.				
1	Birondem	√	1	---	---	√	1	√	2	√	2	√	2	---	10	845	---	
2	Cotorem	√	1	---	---	√	2	√	2	√	1	√	1	---	10	---	---	
3	Dongurli-Thane	---	---	---	---	√	2	√	3	√	5	---	---	---	10	509	1	
4	Guleli	√	1	---	---	---	---	√	1	√	1	√	1	---	10	2449	---	
5	Honda	---	---	---	---	√	1	√	1	√	2	√	1	---	10	2608	---	
6	Mauxi	---	---	---	---	√	1	√	2	√	3	√	1	---	10	2387	---	
7	Morlem	√	1	---	---	√	1	√	3	√	1	√	1	---	10	918	---	
8	Nagargaon	√	1	---	---	√	1	---	---	√	2	√	1	---	10	---	---	
9	Pissurlem	---	---	---	---	√	1	√	1	√	1	√	1	---	10	1837	---	
10	Porlem	√	1	---	---	---	---	√	1	---	---	√	1	---	10	2769	---	
11	Querim	√	1	---	---	√	1	√	2	√	3	√	1	---	10	1098	1	
12	Sanvordem	---	---	---	---	---	---	√	1	√	1	√	1	---	10	285	---	
13	Valpoi M.CL.	√	1	---	---	√	1	√	3	√	3	---	---	---	10	581	---	
Total			8				12		22		25		12	---		16286	2	